

HYDRAULIC TOOLS



Busbar Processing Machine



| Specification | Cutting,punching,horzontal bending |
|-------------------------------|-------------------------------------|
| Item No. | DHY-200 |
| Input voltage/control voltage | 220V/380V |
| Rating working oil pressure | 700kgf/cm2 |
| Output Cutting Force | 35Ton |
| Output Punching Force | 35Ton |
| Output Bending Force | 16Ton |
| Cutting Max | 200mm Width, Cu /AL Thickness3-12mm |
| Punching Max | 200mm Width, Cu /AL Thickness3-12mm |
| Bending Max | 200mm Width, Cu /AL Thickness3-12mm |
| Throat Depth Of Punching | 110mm |
| Punching Dies | 7/9/10.5/13.8/17/20.5mm |
| Weight | 206kgs |
| Package size | 100cm*78cm*133cm |

Features&Functions:

1. This machine is the light of advanced products, and combined with the actual order to improve efficiency and ensure the operational safety requirements designed equipment.
2. Suitable for transmission and distribution in a large workshop and site construction work, and power distribution equipment and switchgear and other electrical appliances factory use.
3. High flexibility, small size and strong function, high production capacity and efficiency.
4. Low-noise sound, beautiful and will not have finished processing the work environment pollution.
5. Multiple functions could make producing busbar easily and quickly.

Note:DHY-200 Consist of 4 tools:

- 1:CWC-200 Hydraulic cutting tool 2: CB-200A Hydraulic bending tool
3:CH-70 Hydraulic punching tool 4:HHB-700A Hydraulic electric pump

Busbar Processing Machine



| Specification | Cutting,punching,horzontal bending |
|-------------------------------|-------------------------------------|
| Item No. | DHY-150 |
| Input voltage/control voltage | 220V/380V |
| Rating working oil pressure | 700kgf/cm2 |
| Output Cutting Force | 16Ton |
| Output Punching Force | 31Ton |
| Output Bending Force | 16Ton |
| Cutting Max | 150mm Width, Cu /AL Thickness3-10mm |
| Punching Max | 150mm Width, Cu /AL Thickness3-10mm |
| Bending Max | 150mm Width, Cu /AL Thickness3-10mm |
| Throat Depth Of Punching | 110mm |
| Punching Dies | 7/9/10.5/13.8/17/20.5mm |
| Weight | 175kgs |
| Package size | 76cm*76cm*100cm |

Features&Functions:

1. This machine is the light of advanced products, and combined with the actual order to improve efficiency and ensure the operational safety requirements designed equipment.
2. Suitable for transmission and distribution in a large workshop and site construction work, and power distribution equipment and switchgear and other electrical appliances factory use.
3. High flexibility, small size and strong function, high production capacity and efficiency.
4. Low-noise sound, beautiful and will not have finished processing the work environment pollution.
5. Multiple functions could make producing busbar easily and quickly.

Note:DHY-150 Consist of 4 tools:

- 1:CWC-150 Hydraulic cutting tool 2: CB-150D Hydraulic bending tool
3:CH-60 Hydraulic punching tool 4:HBB-700A Hydraulic electric pump

Busbar Processing Machine



| Specification | Cutting,punching,horzontal bending |
|-------------------------------|--|
| Item No. | VHB-401 |
| Input voltage/control voltage | 220V/380V |
| Rating working oil pressure | 700kgf/cm2 |
| Output Cutting Force | 20Ton |
| Output Punching Force | 35Ton |
| Output Bending Force | 16Ton |
| Output Crimping Force | 25Ton |
| Cutting Max | 200mm Width, Cu /AL Thickness3-12mm |
| Punching Max | 200mm Width, Cu /AL Thickness3-12mm |
| Bending Max | 200mm Width, Cu /AL Thickness3-12mm |
| Throat Depth Of Punching | 110mm |
| Punching Dies | 7/9/10.5/13.8/17/20.5mm |
| Crimping dies | 16/25/30/50/70/95/120/150/185/240/300/400mm ² |
| Weight | 206kgs |
| Package size | 100cm*78cm*133cm |

Features&Functions:

1. This machine is the light of advanced products, and combined with the actual order to improve efficiency and ensure the operational safety requirements designed equipment.
2. Suitable for transmission and distribution in a large workshop and site construction work, and power distribution equipment and switchgear and other electrical appliances factory use.
3. High flexibility, small size and strong function, high production capacity and efficiency.
4. Low-noise sound, beautiful and will not have finished processing the work environment pollution.
5. Multiple functions could make producing busbar easily and quickly.

Note:VHB-401 Consist of 5 tools:

- 1:CWC-200 Hydraulic cutting tool 2: CB-200A Hydraulic bending tool
3:CH-70 Hydraulic punching tool 4:HHB-700A Hydraulic electric pump 5: FYQ-400 Hydraulic crimping tool

Busbar Processing Machine



| Specification | Cutting,Punching,Vertical and Horizontal Bending |
|-------------------------------|--|
| Item No. | DHY-401 |
| Input voltage/control voltage | 220V/380V |
| Rating working oil pressure | 700kgf/cm2 |
| Output Cutting Force | 20Ton |
| Output Punching Force | 35Ton |
| Output Bending Force | 20Ton |
| Cutting Max | 200mm Width, Cu /AL Thickness3-12mm |
| Punching Max | 200mm Width, Cu /AL Thickness3-12mm |
| Bending Max | 125mm Breadth*10mm thickness |
| Throat Depth Of Punching | 110mm |
| Horizontal bending range | 125X12.5mm |
| Punching Dies | 7/9/10.5/13.8/17/20.5mm |
| Weight | 270kgs |
| Package size | 116cm*76cm*133cm |

Features&Functions:

1. This machine is the light of advanced products, and combined with the actual order to improve efficiency and ensure the operational safety requirements designed equipment.
2. Suitable for transmission and distribution in a large workshop and site construction work, and power distribution equipment and switchgear and other electrical appliances factory use.
3. High flexibility, small size and strong function, high production capacity and efficiency.
4. Low-noise sound, beautiful and will not have finished processing the work environment pollution.
5. Multiple functions could make producing busbar easily and quickly.

Note:DHY-401 Consist of 4 tools:

- 1:CWC-200 Hydraulic cutting tool 2: PLW-125 Hydraulic bending tool
3:CH-70 Hydraulic punching tool 4:HHB-700A Hydraulic electric pump

Angle Bar Processing Machine



| Specification | Angel Iron Cutting,bending,punching |
|-------------------------------|--|
| Item No. | VHB-75 |
| Input voltage/control voltage | 220V/380V |
| Rating working oil pressure | 700kgf/cm2 |
| Cutting Max | 50mm*50mm x5mm(Thickness) |
| Output Punching Force | 31Ton |
| Output Cutting Force | 25Ton |
| Punching Max | 150x10mm |
| Throat Depth Of Punching | 95mm |
| Punching Dies | 3/8"(Φ10.5), 1/2"(Φ13.8), 5/8"(Φ17), 3/4"(Φ20.5)mm |
| Weight | 170kgs |
| Package size | 80cm*60cm*90cm |

Features&Functions:

1. This machine is the light of advanced products, and combined with the actual order to improve efficiency and ensure the operational safety requirements designed equipment.
2. Suitable for transmission and distribution in a large workshop and site construction work, and power distribution equipment and switchgear and other electrical appliances factory use.
3. High flexibility, small size and strong function, high production capacity and efficiency.
4. Low-noise sound, beautiful and will not have finished processing the work environment pollution.
5. Multiple functions could make producing busbar easily and quickly.

Note:VHB-75 Consist of 4 tools:

- 1:CAC-75 Hydraulic cutting tool 2: CWC-200 Hydraulic cutting tool
3:CH-60L Hydraulic punching tool 4:1.5KW Hydraulic electric pump

Angle Bar Processing Machine



| Specification | Angel Iron Cutting,bending,punching |
|-------------------------------|---|
| Item No. | VHB-95 |
| Input voltage/control voltage | 220V/380V |
| Rating working oil pressure | 700kgf/cm2 |
| Power range | 3Kw |
| Cutting Max | 75mm*75mm x6mm(Thickness) |
| Output Punching Force | 31Ton |
| Output Cutting Force | 25Ton |
| Punching Max | 150x 3-10mm |
| Throat Depth Of Punching | 95mm |
| Punching Dies | 3/8"(Φ10.5),1/2"(Φ13.8),5/8"(Φ17),3/4"(Φ20.5)mm |
| Weight | 212kgs |
| Package size | 80cm*60cm*90cm |

Features&Functions:

1. This machine is the light of advanced products, and combined with the actual order to improve efficiency and ensure the operational safety requirements designed equipment.
2. Suitable for transmission and distribution in a large workshop and site construction work, and power distribution equipment and switchgear and other electrical appliances factory use.
3. High flexibility, small size and strong function, high production capacity and efficiency.
4. Low-noise sound, beautiful and will not have finished processing the work environment pollution.
5. Multiple functions could make producing busbar easily and quickly.

Note:VHB-95 Consist of 5 tools:

- 1:CAC-75 Hydraulic cutting tool 2: CAC-75C Hydraulic cutting tool
3:CH-60L Hydraulic punching tool 4:CAC-75W Hydraulic bending tool 5:3KW Hydraulic electric pump

Hydraulic Cutting Machine



| Specification | Hydraulic Cutting Machine |
|---------------|---------------------------|
| Item No. | CWC-150V |
| Cutting force | 20T |
| Cutting Max | 150mm x 10mm |
| Weight | Approx 29kgs |
| Package size | 31.5cm*23.3cm*43.5cm |



| Specification | Hydraulic Cutting Machine |
|---------------|---------------------------|
| Item No. | CWC-200V |
| Cutting force | 25T |
| Cutting Max | 200mm x 12mm |
| Weight | Approx 34kgs |
| Package size | 37.3cm*23.3cm*43.5cm |



| Specification | Hydraulic Cutting Machine |
|---------------|---------------------------|
| Item No. | CWC-150 |
| Cutting force | 16T |
| Cutting Max | 150mm x Cu /AL 3-10mm |
| Weight | Approx 30.4kgs |
| Package size | 30.5cm*19.5cm*42cm |



| Specification | Hydraulic Cutting Machine |
|---------------|---------------------------|
| Item No. | CWC-200 |
| Cutting force | 35T |
| Cutting Max | 200mm x Cu /AL 3-12mm |
| Weight | Approx 36.1kgs |
| Package size | 37cm*20cm*45cm |



| Specification | Hydraulic Cutting Machine |
|---------------|--|
| Item No. | CWC-300 (Double Acting) |
| Cutting force | 100T |
| Stroke | 80mm |
| Cutting Max | 300mm x 12mm(Steel Plate) 300mm x 16mm (Cu/Al busbar) |
| Weight | Approx 120kgs |
| Packing | Wooden case |

Features&Functions:

This cutting tool is cut off the copper and aluminum busbar dedicated equipment required to complete pump(manual pump, pedal pumps, electric pumps)use. Unilateral cut waste-free.

1. It is designed for bending CU/AL busbar.
2. Fast cutting speed without leading to fine scrapping after cutting. The big scrap is good for recycle.
3. V style blade is designed for automatic positioning object to be cut.
4. Cutting surface is smooth without distortion.
5. Portable unit could be carried to site or fixed in the factory for batch cutting.

Hydraulic Cutting Machine



| Specification | Hydraulic Angle Iron Cutter |
|---------------|-----------------------------|
| Item No. | CAC-75 |
| Cutting force | 25T |
| Max thickness | 6mm |
| Max width | 75x75mm |
| Weight | Approx 32.5kgs |
| Package size | 30.5cm*20cm*43.5cm |



| Specification | Hydraulic Angle Iron Cutter |
|---------------|-----------------------------|
| Item No. | CAC-110 |
| Cutting force | 35T |
| Max thickness | 10mm |
| Max width | 110x110mm |
| Weight | Approx 41.1kgs |
| Package size | 35cm*19.5cm*48cm |



| Specification | Hydraulic Charmfering Machine |
|---------------|-------------------------------|
| Item No. | CAC-75Y |
| Cutting force | 25T |
| Max thickness | 8mm |
| Max width | 6X6mm Angle steel |
| Weight | Approx 35kgs |
| Package size | 26cm*25cm*38cm |



| Specification | Hydraulic Angle Iron Cutter |
|---------------|-----------------------------|
| Item No. | CAC-160 |
| Cutting force | 100T |
| Max thickness | 14mm |
| Max width | 160x160mm |
| Weight | Approx 100kgs |
| Package size | 30cmX41cmX61cm |

Features&Functions:

1. Hydraulic angle iron cutter is specialized for cutting angle iron.
2. The tool has the advantage of quick cutting, no scrap, smooth of cutting flat.
3. It is suitable for using to cutter iron steel in building bridge, any places require iron steel.
4. It can work outside, convenient to carry and simple operation.
5. This hydraulic cutting machine is running with hand pump or electric pump.



| Specification | Hydraulic Cutting Machine |
|---------------|---------------------------|
| Item No. | CAC-75D |
| Cutting force | 25T |
| Max thickness | 8mm |
| Max width | 8X8mm Angle steel |
| Weight | Approx 36kgs |
| Package size | 26cm*25cm*38cm |

Hydraulic Cutting Machine



| Specification | Hydraulic angle iron cutter |
|--------------------|-----------------------------|
| Item No. | DJ-55 |
| Cutting force | 16T |
| Bevel cut range | 50mmx50mm*5mm(Thickness) |
| Arc breaking range | 60mmx60mm*6mm(Thickness) |
| Weight | Approx 14kgs |
| Package size | 20cm*14.5cm*25cm |



| Specification | Hydraulic Filleting Machine |
|---------------|-----------------------------|
| Item No. | DJ-75 |
| Cutting force | 16T |
| Cutting range | 30mmx30mm*3mm-75mmx75mm*6mm |
| Weight | Approx 12kgs |
| Package size | 11.5cm*11.5cm*26cm |



| Specification | Hydraulic Cutting Machine |
|---------------|--|
| Item No. | FGH-50 |
| Cutting force | 20T |
| Cutting range | 50mm*50mm Square tube Max 3mm Thickness |
| Weight | Approx 35kgs |
| Package size | 36cm*16.5cm*46.5cm |



| Specification | Hydraulic U Channel Cutting Machine |
|---------------|-------------------------------------|
| Item No. | CG-12 |
| Cutting force | 100T |
| Max thickness | 5#-12# U channel |
| Weight | Approx 110kgs |



| Specification | Hydraulic U Channel Cutting Machine |
|---------------|-------------------------------------|
| Item No. | CG-18 |
| Cutting force | 150T |
| Max thickness | 5#-18# U channel |
| Weight | Approx 329kgs |
| Packing | Wooden case |

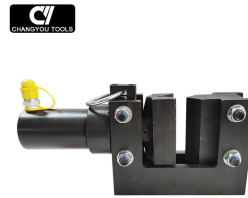
Features&Functions:

1. Hydraulic angle iron cutter is specialized for cutting angle iron.
2. The tool has the advantage of quick cutting, no scrap, smooth of cutting flat.
3. It is suitable for using to cutter iron steel in building bridge, any places require iron steel.
4. It can work outside, convenient to carry and simple operation.
5. This hydraulic cutting machine is running with hand pump or electric pump.

Hydraulic Bending Machine



| Specification | Hydraulic bending tool |
|---------------|------------------------|
| Item No. | CB-150D |
| Bending Force | 16T |
| Max Thickness | 10mm |
| Max Breadth | 150mm |
| Weight | Approx 19.4kgs |
| Package size | 41cm*18.5cm*28.5cm |



| Specification | Hydraulic bending tool |
|---------------|------------------------|
| Item No. | CAC-75W |
| Bending Force | 16T |
| Max thickness | 10mm |
| Max Breadth | 120mm |
| Weight | Approx 24.2kgs |
| Package size | 47.4cm*18cm*25.5cm |



| Specification | Hydraulic bending tool |
|---------------|------------------------|
| Item No. | CB-200A |
| Bending Force | 16T |
| Max thickness | 12mm |
| Max Breadth | 200mm |
| Weight | Approx 26kgs |
| Package size | 28.5cm*20cm*38.5cm |



| Specification | Hydraulic bending tool |
|---------------|------------------------|
| Item No. | CB-200B |
| Bending Force | 20T |
| Max thickness | 12mm |
| Max Breadth | 200mm |
| Weight | Approx 22kgs |
| Package size | 29.5cm*20.5cm*38.7cm |



| Specification | Hydraulic bending tool |
|---------------|------------------------|
| Item No. | CBC-25 |
| Bending Force | 7T |
| Max thickness | 5mm |
| Max Breadth | 200mm |
| Weight | Approx 9kgs |
| Package size | 34cm*15.5cm*11.5cm |



| Specification | Hydraulic bending tool |
|---------------|--|
| Item No. | CB-300 |
| Bending Force | 50T |
| Max thickness | Copper Busbar 20mm Steel Plate:16mm |
| Max Breadth | 300mm |
| Weight | Approx 101kgs |
| Package size | 40cm*28cm*62cm |

Features:

1. Used for bending copper and aluminum busbar and steel bar
2. Could bend different angle with angle meter control
3. With width piston unit set, busbar will not get distort after bending.
4. The tool body could be opened so that bended object could be easily taken out after bending.
5. Portable unit could be taken to site or fixed in factory for batch bending works.
6. Max bending angle 90 degree.
7. Bended objects won't be damaged.

Hydraulic Punching Machine



| Specification | Hydraulic Punching Machine |
|----------------|--|
| Item No. | CH-60 |
| Punching force | 31T |
| Max thickness | CU/AL Plate:3mm-10mm Iron Plate:3mm-8mm |
| Throat depth | 95mm |
| Weight | Approx 19.4kgs |
| Accessories | 3/8"(Φ10.5), 1/2"(Φ13.8), 5/8"(Φ17), 3/4"(Φ20.5)mm |
| Package size | 26cm*14.5cm*38cm |



| Specification | Hydraulic Punching Machine |
|----------------|--|
| Item No. | CH-60L |
| Punching force | 31T |
| Max thickness | CU/AL Plate:3mm-10mm Iron Plate:3mm-8mm |
| Throat depth | 95mm |
| Weight | Approx 19.4kgs |
| Accessories | 3/8"(Φ10.5), 1/2"(Φ13.8), 5/8"(Φ17), 3/4"(Φ20.5)mm |
| Package size | 26cm*14.5cm*38cm |



| Specification | Hydraulic Punching Machine |
|----------------|--|
| Item No. | CH-70 |
| Punching force | 35T |
| Max thickness | CU/AL Plate:3mm-12mm Iron Plate:3mm-10mm |
| Throat depth | 110mm |
| Weight | Approx 35kgs |
| Accessories | 3/8"(Φ10.5), 1/2"(Φ13.8), 5/8"(Φ17), 3/4"(Φ20.5)mm |
| Package size | 32cm*14cm*23cm |



| Specification | Hydraulic Punching Machine |
|----------------|--|
| Item No. | CH-70L |
| Punching force | 35T |
| Max thickness | CU/AL Plate:3mm-12mm Iron Plate:3mm-10mm |
| Throat depth | 110mm |
| Weight | Approx 35.4kgs |
| Accessories | 3/8"(Φ10.5), 1/2"(Φ13.8), 5/8"(Φ17), 3/4"(Φ20.5)mm |
| Package size | 32cm*14cm*23cm |

Features&Functions:

- 1 Hydraulic busbar puncher is designed for punching holes on Cu/Al bus bar and steel bar.
- 2 Punching the different kind metal sheet up to 10mm, and Cu/Al bar up to 12mm.
- 3 This type of hydraulic punch tool is assembled with CP-700 hydraulic hand pump or HHB-700A hydraulic electric pump.
4. We offer all kinds of dies and standard dies as spare part including 10.5mm, 13.8mm, 17mm, 20.5mm.
6. Half-opened casting body, widely use in different areas.

Hydraulic Punching Machine



| Specification | Hydraulic Punching Machine |
|----------------|----------------------------|
| Item No. | CH-80A |
| Punching force | 50T |
| Max thickness | 16mm |
| Max Hole | φ30mm |
| Angle steel | 6-12# |
| U channel | 8-15# |
| Throat depth | 125mm |
| Weight | Approx 82.1kgs |
| Accessories | φ16/18/22/25mm |
| Package size | 36.3cm*21.2cm*42cm |



| Specification | Hydraulic Punching Machine |
|----------------|----------------------------|
| Item No. | CH-80B |
| Punching force | 50T |
| Max thickness | 16mm |
| Max Hole | φ30mm |
| Angle steel | 6-12# |
| U / H Channel | 8-15# |
| Throat depth | 125mm |
| Weight | Approx 90kgs |
| Accessories | φ16/18/22/25mm |
| Package size | 41cm*35.6cm*31cm |



| Specification | Hydraulic Punching Machine |
|----------------|----------------------------|
| Item No. | CH-100A |
| Punching force | 100T |
| Max thickness | 20mm |
| Max Hole | φ32mm |
| Angle steel | 8-15# |
| U Channel | 10-15# |
| Throat depth | 130mm |
| Weight | Approx 125kgs |
| Accessories | φ22/25/28/32mm |
| Package size | 42.6cm*40cm*34cm |



| Specification | Hydraulic Punching Machine |
|----------------|----------------------------|
| Item No. | CH-100B |
| Punching force | 100T |
| Max thickness | 20mm |
| Max Hole | φ32mm |
| Angle steel | 8-15# |
| U Channel | 10-15# |
| Throat depth | 130mm |
| Weight | Approx 136kgs |
| Accessories | φ22/25/28/32mm |
| Package size | 41.6cm*26.3cm*63.2cm |

Hydraulic Punching Machine



| Specification | Hydraulic Punching Machine |
|----------------|----------------------------|
| Item No. | CH-75 |
| Punching force | 35T |
| Max thickness | 10mm |
| Angle steel | 3-10# |
| U channel | 6-12# |
| Throat depth | 80mm |
| Weight | Approx 35kgs |
| Accessories | φ10.5/13.8/17.5/20.5mm |
| Package size | 27.5cm*22cm*36cm |



| Specification | Hydraulic Punching Machine |
|----------------|----------------------------|
| Item No. | CH-200A |
| Punching force | 200T |
| Max thickness | 30mm |
| Max Hole | φ40mm |
| Throat depth | 160mm |
| Weight | Approx 380.1kgs |
| Accessories | φ22/25/28/32mm |
| Package size | 52cm*33.4cm*57.2cm |



| Specification | Hydraulic cutting tool |
|----------------|--|
| Item No. | SH-70 |
| Punching force | 31T |
| Max thickness | 12mm of copper sheet/8mm of Iron Plate |
| Throat depth | 77mm |
| Weight | Approx 18kgs |
| Accessories | 10.5/13.8/17.5/20.5mm |
| Packing | Wooden case |



| Specification | Hydraulic Punching Machine |
|----------------|----------------------------|
| Item No. | CH-150 |
| Punching force | 150T |
| Max thickness | 25mm |
| Max Hole | φ32mm |
| Throat depth | 150mm |
| Weight | Approx 220kgs |
| Accessories | φ22/25/28/32mm |
| Package size | 52cm*33.4cm*57.2cm |

Features&Functions:

- 1 This Hydraulic punching machine is designed for punching holes on H shaped channel iron wings.
2. Fast speed punching, accurate position without deviation.
3. Hydraulic punch could avoid cutting scraps while punching hole. It is much safer and clearer while operation.
4. Portable unit could be taken site or fixed in factory for batch punching work.
5. This type of hydraulic punch tool is matching 1500W electric pump. If you buy this punch, you could also order DB150-D2 electric pump in convenient.

Hydraulic Embossing Machine



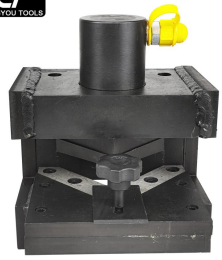
| Specification | Embossing Machine |
|----------------|-------------------|
| Item No. | HYB-150 |
| Output | 72T |
| Working range | 150X12.5mm |
| Working Stroke | 30mm |
| Package size | 47cm*34cm*52cm |
| Weight | 58Kgs |



| Specification | Embossing Machine |
|----------------|-------------------|
| Item No. | HYB-150A |
| Output | 55T |
| Working range | 150X12.5mm |
| Working Stroke | 30mm |
| Package size | 30cm*29cm*51cm |
| Weight | 55Kgs |



| Specification | Embossing Machine |
|----------------|-------------------|
| Item No. | HYB-150B |
| Output | 55T |
| Working range | 150X12.5mm |
| Working Stroke | 30mm |
| Package size | 30cm*29cm*51cm |
| Weight | 55Kgs |



| Specification | Angle cutting machine |
|---------------|-----------------------|
| Item No. | CAC-75C |
| Cutting force | 25T |
| Max thickness | 6mm |
| Max width | 6X6mm Angle steel |
| Package size | 29.5cm*26.7cm*30.5cm |
| Weight | Approx 48kgs |

Features&Functions:

This Hydraulic punching machine is mainly used for copper and aluminum busbar connections.

Hydraulic Electric Pump



| Specification | Hydraulic electric pump |
|---------------|------------------------------|
| Item No. | DYB-63A |
| Rated output | High pressure:70Mpa |
| Pump capacity | High pressure stage:0.9L/min |
| Power rating | 0.75kw |
| RPM | 1400r/min |
| Working power | 50-60Hz/110V-380V |
| Oil capacity | 7L |
| Package size | 36cm*27.5cm*44.4cm |



| Specification | Hydraulic electric pump |
|---------------|---|
| Item No. | HHB-700AB |
| Rated output | High pressure:70Mpa Low pressure:7Mpa |
| Pump capacity | High pressure stage:0.9L/min Low pressure stage:5L/min |
| Power rating | 0.75kw |
| RPM | 1400r/min |
| Working power | 50-60Hz/110V-380V |
| Oil capacity | 7L |



| Specification | Hydraulic electric pump |
|---------------|---|
| Item No. | HHB-700D3 |
| Rated output | High pressure :70Mpa Low pressure :7Mpa |
| Pump capacity | High pressure stage:0.9L/min Low pressure stage:5L/min |
| Power rating | 0.75kw |
| RPM | 1400r/min |
| Working power | 50-60Hz/110V-380V |
| Oil capacity | 7L |
| Package size | 36.4cm*30cm*48.2cm |



| Specification | Hydraulic electric pump |
|---------------|---|
| Item No. | DB150-S2 |
| Rated output | High pressure:70Mpa Low pressure:10Mpa |
| Pump capacity | High pressure stage:1.7L/min Low pressure stage:7.9L/min |
| Power rating | 1.5kw |
| Speed | 1400r/min |
| Working power | 50-60Hz/110V-380V |
| Oil capacity | 30L |



| Specification | Hydraulic electric pump |
|---------------|--|
| Item No. | DB300-S2 |
| Rated output | High pressure:70Mpa Low pressure:10Mpa |
| Pump capacity | High pressure stage:2.8L/min Low pressure stage:14L/min |
| Power rating | 3kw |
| RPM | 1400r/min |
| Working power | 50-60Hz/110V-380V |
| Oil capacity | 30L |

Features&Functions:

1. Light weight and carrying handle allows for easy transport of the pump.
2. Two speed operation reduces cycle time for improved productivity.
3. All valves are 3 position for advance-hold-retract.
4. All the pumps are equipped with pressure gauge, which minimizes the risk of overloading and ensure long, dependable service.
5. Manual valve and motor control
6. Internal pressure relief valve prevents overloading
7. Oil pipe fitted with quick coupling could be ordered at any length.
8. Oil pipe coupling fitted with ZG 3/8" Female thread.

Hydraulic Electric Pump

| Specification | Hydraulic electric pump |
|---------------|---|
| Item No. | HHB-700A |
| Rated output | High pressure:70Mpa Low pressure:7Mpa |
| Pump capacity | High pressure stage:0.9L/min Low pressure stage:5L/min |
| Power rating | 0.75kw |
| RPM | 1400r/min |
| Working power | 50-60Hz/110V-380V |
| Oil capacity | 7L |
| Package size | 36cm*27.5cm*44.5cm |

| Specification | Hydraulic electric pump |
|---------------|---|
| Item No. | DB075-D2 |
| Rated output | High pressure:70Mpa Low pressure:7Mpa |
| Pump capacity | High pressure stage:0.9L/min Low pressure stage:5L/min |
| Power rating | 0.75kw |
| RPM | 1400r/min |
| Working power | 50-60Hz/110V-380V |
| Oil capacity | 7L |
| Package size | 36cm*27.8cm*48cm |



| Specification | Hydraulic electric pump |
|---------------|---|
| Item No. | DB150-D1 |
| Rated output | High pressure:70Mpa Low pressure:7Mpa |
| Pump capacity | High pressure stage:1.7L/min Low pressure stage:7.9L/min |
| Power rating | 1.5kw |
| RPM | 1400r/min |
| Working power | 50-60Hz/110V-380V |
| Oil capacity | 10L |

| Specification | Hydraulic electric pump |
|---------------|---|
| Item No. | DB150-D2 |
| Rated output | High pressure:70Mpa Low pressure:10Mpa |
| Pump capacity | High pressure stage:1.7L/min Low pressure stage:7.9L/min |
| Power rating | 1.5kw |
| RPM | 1400r/min |
| Working power | 50-60Hz/110V-380V |
| Oil capacity | 10L |

| Specification | Hydraulic electric pump |
|---------------|---|
| Item No. | DB150-D3 |
| Rated output | High pressure:70Mpa Low pressure:10Mpa |
| Pump capacity | High pressure stage:1.7L/min Low pressure stage:7.9L/min |
| Power rating | 1.5kw |
| RPM | 1400r/min |
| Working power | 50-60Hz/110V-380V |
| Oil capacity | 10L |

Features&Functions:

1. Equipped with solenoid valve. Ideal for production & Lighting.
2. Light weight and carrying handle allows for easy transport of the pump.
3. Two speed operation reduces cycle time for improved productivity.
4. All valves are 3 position for advance-hold-retract.
5. All the pumps are equipped with pressure gauge, which minimizes the risk of overloading and ensure long, dependable service.
6. Internal pressure relief valve prevents overloading.

Hydraulic Electric Pump



| Specification | Hydraulic electric pump |
|---------------|---|
| Item No. | QQ-700 |
| Rated output | High pressure:70Mpa Low pressure:7Mpa |
| Pump capacity | High pressure stage:0.7L/min Low pressure stage:5L/min |
| Power rating | 0.62kw |
| Speed | 3700r/min |
| Working power | 50-60Hz/110V-380V |
| Oil capacity | 2L |
| Weight | 16Kgs |
| Package size | 25.5cm*24.3cm*39.7cm |



| Specification | Hydraulic electric pump |
|---------------|---|
| Item No. | DB150-D2B |
| Rated output | High pressure:70Mpa Low pressure:7Mpa |
| Pump capacity | High pressure stage:1.7L/min Low pressure stage:7.9L/min |
| Power rating | 1.5kw |
| Speed | 1400r/min |
| Working power | 50-60Hz/110V-380V |
| Oil capacity | 30L |
| Package size | 50.5cm*38.2cm*62.2cm |



| Specification | Hydraulic electric pump |
|---------------|--|
| Item No. | DB300-D1 |
| Rated output | High pressure:70Mpa Low pressure:7Mpa |
| Pump capacity | High pressure stage:2.8L/min Low pressure stage:14L/min |
| Power rating | 3kw |
| RPM | 1400r/min |
| Working power | 50-60Hz/110V-380V |
| Oil capacity | 30L |
| Package size | 50.5cm*38.2cm*62.2cm |



| Specification | Hydraulic electric pump |
|---------------|--|
| Item No. | DB300-D2 |
| Rated output | High pressure:70Mpa Low pressure:7Mpa |
| Pump capacity | High pressure stage:2.8L/min Low pressure stage:14L/min |
| Power rating | 3kw |
| RPM | 1400r/min |
| Working power | 50-60Hz/110V-380V |
| Oil capacity | 30L |
| Package size | 50.5cm*38.2cm*62.2cm |

Features&Functions:

1. Equipped with solenoid valve. Ideal for production & Lighting.
2. Light weight and carrying handle allows for easy transport of the pump.
3. Two speed operation reduces cycle time for improved productivity.
4. All valves are 3 position for advance-hold-retract.
5. All the pumps are equipped with pressure gauge, which minimizes the risk of overloading and ensure long, dependable service.
6. Internal pressure relief valve prevents overloading.

Hydraulic Electric Pump



| Specification | Hydraulic electric pump |
|---------------|--|
| Item No. | DB550-D2 |
| Rated output | High pressure:70Mpa Low pressure:7Mpa |
| Pump capacity | High pressure stage:4.9L/min Low pressure stage:30L/min |
| Power rating | 5.5kw |
| RPM | 1400r/min |
| Working power | 50Hz/380V |
| Oil capacity | 100L |
| Package size | 70cm*52cm*100cm |
| Weight | 141KGS |



| Specification | Hydraulic electric pump |
|---------------|--|
| Item No. | DB750-D2 |
| Rated output | High pressure:70Mpa Low pressure:7Mpa |
| Pump capacity | High pressure stage:6.2L/min Low pressure stage:30L/min |
| Power rating | 7.5kw |
| RPM | 1400r/min |
| Working power | 50Hz/380V |
| Oil capacity | 100L |
| Package size | 70cm*52cm*100cm |
| Weight | 155KGS |

Features&Functions:

- 1. Equipped with solenoid valve. Ideal for production & Lighting.
- 2.Light weight and carrying handle allows for easy transport of the pump.
- 3.Two speed operation reduces cycle time for improved productivity.
- 4.All valves are 3 position for advance-hold-retract.
- 5.All the pumps are equipped with pressure gauge, which minimizes the risk of overloading and ensure long, dependable service.
- 6.Internal pressure relief valve prevents overloading.

Hydraulic Electric Pump



750W



| Specification | Hydraulic electric pump |
|---------------|---|
| Item No. | MEN-208E |
| Rated output | High pressure:70Mpa Low pressure:≤2.5Mpa |
| Pump capacity | High pressure stage:0.6L/min Low pressure stage:3.5L/min |
| Power rating | 0.75kw |
| REV | 2800r/min |
| Working power | 50-60Hz/110V-380V |
| Oil capacity | 8L |
| Note | Single acting Automatic relief |

750W



| Specification | Hydraulic electric pump |
|---------------|---|
| Item No. | MER-228E |
| Rated output | High pressure:70Mpa Low pressure:≤2.5Mpa |
| Pump capacity | High pressure stage:0.6L/min Low pressure stage:3.5L/min |
| Power rating | 0.75kw |
| REV | 2800r/min |
| Working power | 50-60Hz/110V-380V |
| Oil capacity | 8L |
| Note | Double acting |

750W



| Specification | Hydraulic electric pump |
|---------------|---|
| Item No. | MER-218EB |
| Rated output | High pressure:70Mpa Low pressure:≤2.5Mpa |
| Pump capacity | High pressure stage:0.6L/min Low pressure stage:3.5L/min |
| Power rating | 0.75kw |
| REV | 2800r/min |
| Working power | 50-60Hz/110V-380V |
| Oil capacity | 8L |
| Note | Single acting with pressure retaining valve |

750W



| Specification | Hydraulic electric pump |
|---------------|---|
| Item No. | MER-248E |
| Rated output | High pressure:70Mpa Low pressure:≤2.5Mpa |
| Pump capacity | High pressure stage:0.6L/min Low pressure stage:3.5L/min |
| Power rating | 0.75kw |
| REV | 2800r/min |
| Working power | 50-60Hz/110V-380V |
| Oil capacity | 8L |
| Note | Double acting |

Features&Functions:

High Pressure, Automatic oil relief, Low noise

Hydraulic Electric Pump

1.5KW



| Specification | Hydraulic electric pump |
|---------------|---|
| Item No. | MER-3120KB |
| Rated output | High pressure:70Mpa Low pressure:≤7Mpa |
| Pump capacity | High pressure stage:1.2L/min Low pressure stage:8.5L/min |
| Power rating | 1.5kw |
| REV | 1440r/min |
| Working power | 50-60Hz/110V-380V |
| Oil capacity | 15L |
| Note | Double acting |

1.5KW



| Specification | Hydraulic electric pump |
|---------------|---|
| Item No. | MER-3420K |
| Rated output | High pressure:70Mpa Low pressure:≤7Mpa |
| Pump capacity | High pressure stage:1.2L/min Low pressure stage:8.5L/min |
| Power rating | 1.5kw |
| REV | 1440r/min |
| Working power | 50-60Hz/110V-380V |
| Oil capacity | 15L |
| Note | Double acting |

1200W



| Specification | Hydraulic electric pump |
|---------------|---|
| Item No. | MCN-603E |
| Rated output | High pressure:70Mpa Low pressure:≤3Mpa |
| Pump capacity | High pressure stage:0.7L/min Low pressure stage:3.5L/min |
| Power rating | 1.2kw |
| Working power | 50-60Hz/110V-380V |
| Oil capacity | 4L |
| Note | Single acting Automatic relief |

1200W



| Specification | Hydraulic electric pump |
|---------------|---|
| Item No. | MCN-604E |
| Rated output | High pressure:70Mpa Low pressure:≤3Mpa |
| Pump capacity | High pressure stage:0.7L/min Low pressure stage:3.5L/min |
| Power rating | 1.2kw |
| Working power | 50-60Hz/110V-380V |
| Oil capacity | 4L |
| Note | Double acting |

Features&Functions:

High Pressure, Automatic oil relief, Low noise

Hydraulic Electric Pump



1.5KW



| Specification | Hydraulic electric pump |
|---------------|---|
| Item No. | MER-3420KB |
| Rated output | High pressure:70Mpa Low pressure:≤7Mpa |
| Pump capacity | High pressure stage:1.2L/min Low pressure stage:8.5L/min |
| Power rating | 1.5kw |
| REV | 1440r/min |
| Working power | 50-60Hz/110V-380V |
| Oil capacity | 15L |
| Note | Double acting with pressure retaining valve |

1.5KW



| Specification | Hydraulic electric pump |
|---------------|---|
| Item No. | MER-3220K |
| Rated output | High pressure:70Mpa Low pressure:≤7Mpa |
| Pump capacity | High pressure stage:1.2L/min Low pressure stage:8.5L/min |
| Power rating | 1.5kw |
| REV | 1440r/min |
| Working power | 50-60Hz/110V-380V |
| Oil capacity | 15L |
| Note | Double acting |

1.5KW



| Specification | Hydraulic electric pump |
|---------------|---|
| Item No. | MER-3220KB |
| Rated output | High pressure:70Mpa Low pressure:≤7Mpa |
| Pump capacity | High pressure stage:1.2L/min Low pressure stage:8.5L/min |
| Power rating | 1.5kw |
| REV | 1440r/min |
| Working power | 50-60Hz/110V-380V |
| Oil capacity | 15L |
| Note | Double acting with pressure retaining valve |

1200W



| Specification | Hydraulic electric pump |
|---------------|---|
| Item No. | MCN-613EB |
| Rated output | High pressure:70Mpa Low pressure:≤3Mpa |
| Pump capacity | High pressure stage:0.7L/min Low pressure stage:3.5L/min |
| Power rating | 1.2kw |
| Working power | 50-60Hz/110V-380V |
| Oil capacity | 4L |
| Note | Single acting with pressure retaining valve |

Features&Functions:

High Pressure, Automatic oil relief, Low noise

Gasoline Powered Pump



| Specification | Gasoline Pump |
|---------------|---|
| Item No. | DYB-750JD |
| Rated output | Pressure:75Mpa |
| Pump capacity | High pressure stage:1L/min Low pressure stage:8L/min |
| REV | 2550r/min |
| Working power | 50-60Hz/110V-380V |
| Oil capacity | 15L |
| Dimension | 62cmx38cmx55cm |



| Specification | Hydraulic manual pump |
|---------------------|--|
| Item No. | CP-390 |
| Max output pressure | 600kg/cm2 |
| Output of oil | High pressure stage:1.8CC Low pressure stage:10CC |
| Capacity of oil | 400CC |
| Weight | 7kgs |
| Package size | 45cm*18.6cm*15cm |



| Specification | Gasoline Pump |
|---------------|---|
| Item No. | ZHH700R |
| Rated output | Pressure:70Mpa |
| Pump capacity | High pressure stage:1.2L/min Low pressure stage:6L/min |
| REV | 3000r/min |
| Working power | 50-60Hz/110V-380V |
| Oil capacity | 25L |
| Dimension | 52.5cm*36.5cm*51cm |



| Specification | Hydraulic manual pump |
|---------------------|--|
| Item No. | CP-800 |
| Max output pressure | High pressure:70Mpa Low pressure:2Mpa |
| Output of oil | High pressure stage:2.3CC Low pressure stage:13CC |
| Capacity of oil | 3000CC |
| Weight | 15kgs |
| Package size | 73cm*24cm*27cm |

Hydraulic Manual Pump



| Specification | Hydraulic manual pump |
|---------------------|--|
| Item No. | CP-700 |
| Max output pressure | High pressure:70Mpa Low pressure:2Mpa |
| Output of oil | High pressure stage:2.3CC Low pressure stage:13CC |
| Capacity of oil | 900CC |
| Weight | 11kgs |
| Package size | 65.7cm*18.6cm*18.6cm |



| Specification | Hydraulic manual pump |
|---------------------|--|
| Item No. | CP-700B |
| Max output pressure | High pressure:70Mpa Low pressure:2Mpa |
| Output of oil | High pressure stage:2.3CC Low pressure stage:13CC |
| Capacity of oil | 900CC |
| Weight | 11.7kgs |
| Package size | 75cm*18.5cm*27cm |

| Specification | Hydraulic manual pump |
|---------------------|--------------------------|
| Item No. | CP-180 |
| Max output pressure | High pressure:60Mpa |
| Output of oil | High pressure stage:20CC |
| Capacity of oil | 400CC |
| Weight | 5kgs |
| Package size | 48cm*26cm*13cm |



| Specification | Hydraulic manual pump |
|---------------------|--------------------------|
| Item No. | CP-600 |
| Max output pressure | High pressure:60Mpa |
| Output of oil | High pressure stage:20CC |
| Capacity of oil | 400CC |
| Weight | 5kgs |
| Package size | 50cm*26cm*16cm |

Features&Functions:

1. Pump is designed in two stage of high and low speed for quick oil output. Even if lack of electric power, It could still be operated conviniently. It is the same as the electric pump in any working pressure and fuction.
2. Manual operation style, oil pipe fitted with quick coupling could be odered in any length.
3. Internal pressure relief valve for overload protection.
4. Oil pipe coupling with ZG 3/8" thread.
5. Two-speed operation reduces handle effort and strokes thus reduces operator fatigue.
6. Handle lock on most hand pumps for easy portability and plunger safety, during site handling.

Hydraulic Manual Pump



| Specification | Hydraulic manual pump |
|---------------------|--|
| Item No. | CP-700A |
| Max output pressure | High pressure:70Mpa Low pressure:2Mpa |
| Output of oil | High pressure stage:2.26CC Low pressure stage:12.26CC |
| Capacity of oil | 2800CC |
| Weight | 14kgs |
| Package size | 75.5cm*18.3cm*19cm |



| Specification | Hydraulic manual pump |
|---------------------|--|
| Item No. | CP-700A-B |
| Max output pressure | High pressure:70Mpa Low pressure:2Mpa |
| Output of oil | High pressure stage:2.26CC Low pressure stage:12.26CC |
| Capacity of oil | 2800CC |
| Weight | 14kgs |
| Package size | 75.5cm*18.3cm*19cm |



| Specification | Hydraulic manual pump |
|---------------------|--|
| Item No. | CP-800S |
| Max output pressure | High pressure:70Mpa Low pressure:2Mpa |
| Output of oil | High pressure stage:2.26CC Low pressure stage:12.26CC |
| Capacity of oil | 3000CC |
| Weight | 20kgs |
| Package size | 73cm*24cm*27cm |



| Specification | Hydraulic manual pump |
|---------------------|--|
| Item No. | CP-1000 |
| Max output pressure | High pressure:70Mpa Low pressure:2Mpa |
| Output of oil | High pressure stage:2.3CC Low pressure stage:13CC |
| Capacity of oil | 7000-7500CC |
| Weight | 25kgs |
| Package size | 79cm*29cm*47cm |



| Specification | Hydraulic manual pump |
|---------------------|--|
| Item No. | CP-700F |
| Max output pressure | High pressure:70Mpa Low pressure:2Mpa |
| Output of oil | High pressure stage:2.3CC Low pressure stage:13CC |
| Capacity of oil | 1100CC |
| Weight | 13kgs |
| Package size | 67cm*21cm*21cm |



| Specification | Hydraulic manual pump |
|---------------------|--|
| Item No. | CP-150S (Double Acting) |
| Max output pressure | High pressure:70Mpa Low pressure:2Mpa |
| Output of oil | High pressure stage:2.3CC Low pressure stage:13CC |
| Capacity of oil | 2100CC |
| Weight | 25kgs |
| Package size | 79cm*29cm*47cm |

Hydraulic Pedal Pump



| Specification | Hydraulic pedal pump |
|---------------------|---|
| Item No. | CFP-800 |
| Max output pressure | High pressure:70Mpa Low pressure:2Mpa |
| Output of oil | High pressure stage :2.3CC Low pressure stage:13CC |
| Capacity of oil | 700CC |
| Weight | 10.8kgs |
| Package size | 66cm*20cm*30cm |



| Specification | Hydraulic pedal pump |
|---------------------|--|
| Item No. | CFR-800 |
| Max output pressure | High pressure:70Mpa Low pressure:2Mpa |
| Output of oil | High pressure stage:2.3CC Low pressure stage:13CC |
| Capacity of oil | 700CC |
| Weight | 15kgs |
| Package size | 62cm*22cm*28cm |



| Specification | Hydraulic pedal pump |
|---------------------|--|
| Item No. | CFP-700D |
| Max output pressure | High pressure :70Mpa Low pressure:2Mpa |
| Output of oil | High pressure stage:2.26CC Low pressure stage:12.26CC |
| Capacity of oil | 900CC |
| Weight | 12kgs |
| Package size | 45cm*15cm*20cm |



| Specification | Hydraulic manual pump |
|---------------------|--|
| Item No. | CP-150 |
| Max output pressure | High pressure:70Mpa Low pressure:2Mpa |
| Output of oil | High pressure stage:2.3CC Low pressure stage:13CC |
| Capacity of oil | 7000-7500CC |
| Weight | 26kgs |
| Package size | 79cm*29cm*47cm |

Features&Functions:

1. Hands free operation reduces operator fatigue.
2. All metal construction won't burn through in welding environments.
3. Handle lock for easy portability and plunger safety during handling .
4. Convenient fill port allows pumps to be filled in quickly and easily.
5. Internal pressure relief valve for overload protection Large valve knob gives added control for slowly metering loads down
6. Two speed operation reduces handle effort and strokes and reduces operator fatigue.

Air Hydraulic Pump

| Specification | Air Hydraulic Pump |
|---------------------|-------------------------------|
| Item No. | BQ-DA1(Polyethylene) |
| Rated pressure | 70Mpa |
| Air pressure) | 1.7-8.6 (kg/cm ³) |
| Air consumption | 255L/min |
| No-load output flow | 1.16L/min |
| Load output flow | 0.15L/min |
| Air Intake Port | 1/4"-18NPTF |
| Oil PORT | 3/8"-18 NPTF |
| Capacity of oil | 1.6L |
| Weight | 5.8kgs |

| Specification | Air Hydraulic Pump |
|---------------------|-------------------------------|
| Item No. | BQ-DA6(Steel Tank) |
| Rated pressure | 70Mpa |
| Air pressure) | 1.7-8.6 (kg/cm ³) |
| Air consumption | 255L/min |
| No-load output flow | 1.16L/min |
| Load output flow | 0.15L/min |
| Air Intake Port | 1/4"-18NPTF |
| Oil PORT | 3/8"-18 NPTF |
| Capacity of oil | 3.8L |
| Weight | 8.8kgs |



| Specification | Air Hydraulic Pump |
|---------------------|-------------------------------|
| Item No. | BQ-DA2(Polyethylene) |
| Rated pressure | 70Mpa |
| Air pressure) | 1.7-8.6 (kg/cm ³) |
| Air consumption | 255L/min |
| No-load output flow | 1.16L/min |
| Load output flow | 0.15L/min |
| Air Intake Port | 1/4"-18NPTF |
| Oil PORT | 3/8"-18 NPTF |
| Capacity of oil | 2.3L |
| Weight | 6.7kgs |

| Specification | Air Hydraulic Pump |
|---------------------|-------------------------------|
| Item No. | BQ-DA5(Aluminum Tank) |
| Rated pressure | 70Mpa |
| Air pressure) | 1.7-8.6 (kg/cm ³) |
| Air consumption | 255L/min |
| No-load output flow | 1.16L/min |
| Load output flow | 0.15L/min |
| Air Intake Port | 1/4"-18NPTF |
| Oil PORT | 3/8"-18 NPTF |
| Capacity of oil | 1.6L |
| Weight | 5.8kgs |

Features&Functions:

1. Driven by compressed air, there is no danger of electric sparks or flames, which can be used in flammable and explosive working environments.
2. The structure is compact, light and easy to carry with a low price.
3. Low air consumption and low operating cost.
4. High-strength fuel tank and special hydraulic oil can adapt to harsh working environment.
5. The rated pressure is 70MPa, and the built-in safety relief valve is used for overload protection.
6. The threaded hole of the oil outlet is 3/8"NPTF, and the elevation angle is 11° , which is convenient for oil pipe or joint connection and sealing.
7. There are threaded mounting holes at the bottom of the fuel tank for easy installation and fixation.
8. High-quality seals ensure stable performance and long service life of the pump; simple maintenance and low cost of use.
9. The accessories are with high processing precision, good sealing performance, no leakage and good pressure-holding performance.

Manual Pressure Test Pump



| Item no. | Pressure (kg/cm ²) | Flow Volum (ML) | Water capacity (Kg) | Weight (Kg) |
|----------|--------------------------------|-----------------|---------------------|-------------|
| T-25K-P | 2.5Mpa | 32ML | 2.5L | 4 |
| T-50K-P | 5.0Mpa | 32ML | 5.0L | 4 |
| T-100K-P | 10Mpa | 32ML | 10L | 4 |



| Item no. | Pressure (Mpa) | Flow Volum (ML) | Water capacity (Kg) | Weight (Kg) |
|----------|----------------|-----------------|---------------------|-------------|
| SB-1.6G | 1.6 | 13 | 16 | 6 |
| SB-2.5G | 2.5 | 13 | 25 | 6 |
| SB-4G | 4 | 13 | 40 | 6 |
| SB-6.3G | 6.3 | 13 | 63 | 9 |



| Item no. | Pressure (kg/cm ²) | Flow Volum (ML) High Pressure | Flow Volum (ML) Low Pressure | Water capacity (Kg) | Weight (Kg) |
|----------|--------------------------------|-------------------------------|------------------------------|---------------------|-------------|
| 2DSY-25 | 25Mpa | 6ML | 40ML | 250kg | 16.2Kgs |
| 2DSY-40 | 40Mpa | 6ML | 40ML | 400kg | 16.2Kgs |
| 2DSY-60 | 60Mpa | 3ML | 40ML | 600kg | 17.2Kgs |
| 2DSY-80 | 80Mpa | 3ML | 40ML | 800kg | 17.2Kgs |
| 2SDY-100 | 100Mpa | 3ML | 48ML | 1000kg | 18.2kgs |



| Item no. | Pressure (Mpa) | Flow Volum (ML) | Water capacity (Kg) | Weight (Kg) |
|----------|----------------|-----------------|---------------------|-------------|
| SB-10G | 10 | 38 | 100 | 9 |
| SB-16G | 16 | 38 | 160 | 10 |
| SB-25G | 25 | 38 | 250 | 12 |
| SB-40G | 40 | 38 | 400 | 12 |



| Item no. | Pressure (kg/cm ²) | Flow Volum | Water Tank Volum | Weight (Kg) |
|---------------------|--------------------------------|------------|------------------|-------------|
| RP-50 | 0-5Mpa | 45L | 12L | 9.7 |
| Size:49.5*18.5*30cm | | | | |

Features&Functions:

1. Manual testing pump is the main test instrument of measuring pressure vessel equipment, the highest working pressure of up to 800 kg/cm². Within 0 ~ 800 kg/cm² at any stage of the correct pressure for hydrostatic test, widely used in, chemical industry, construction, plumbing, oil, coal, metallurgy, scientific system, shipbuilding and other industries. Special testing of pressure vessels and pressure equipment, piping, valves, rubber fittings and other pressure device under pressure

Electric Test Pump



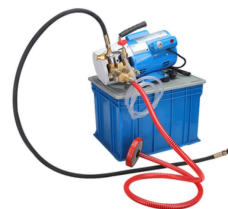
| Item no. | Pressure(kg/cm ²) | Flow Volum | Volts | Power |
|-----------------|-------------------------------|------------|-----------|-------|
| DSY-25 | 0-2.5Mpa | 180L/H | 110V-220V | 150W |
| Size:36*22*13cm | | | | |
| Weight:14KGS | | | | |



| Item no. | Pressure(kg/cm ²) | Flow Volum | Volts | Power |
|-----------------|-------------------------------|------------|-----------|-------|
| DSY-60 | 0-6.0Mpa | 260L/H | 110V-220V | 250W |
| Size:40*30*27cm | | | | |
| Weight:14KGS | | | | |



| Item no. | Pressure(kg/cm ²) | Flow Volum | Volts | Power |
|-----------------|-------------------------------|------------|-----------|-------|
| DSY-100 | 0-10Mpa | 180L/H | 110V-220V | 350W |
| Size:40*30*29cm | | | | |
| Weight:14.5KGS | | | | |



| Item no. | Pressure(kg/cm ²) | Flow Volum | Volts | Power |
|-----------------|-------------------------------|------------|-----------|-------|
| DSY-60A | 0-6.0Mpa | 360L/H | 110V-220V | 400W |
| Size:40*30*27cm | | | | |
| Weight:18KGS | | | | |



| Item no. | Pressure(kg/cm ²) | Flow Volum | Volts | Power | Current |
|-----------------|-------------------------------|------------|-------|-------|---------|
| DSY-25A | 0-2.5Mpa | 360L/H | 220V | 200W | 3.0A |
| Size:36*30*20cm | | | | | |
| Weight:16KGS | | | | | |



| Item no. | Pressure(kg/cm ²) | Flow Volum | Volts | Power | Current |
|-----------------|-------------------------------|------------|-------|-------|---------|
| DSY-50A | 0-5Mpa | 540L/H | 220V | 350W | 5.0A |
| Size:36*30*20cm | | | | | |
| Weight:18KGS | | | | | |

Features&Functions:

.Within 0 ~ 800 kg/cm2 at any stage of the correct pressure for hydrostatic test, widely used in, chemical industry, construction, plumbing, oil, coal, metallurgy, scientific system, shipbuilding and other industries. Special testing of pressure vessels and pressure equipment, piping, valves, rubber fittings and other pressure device under pressure

Electric Test Pump



| Item no. | Pressure (kg/cm ²) | Flow Volum | Volts | Power |
|-----------------|--------------------------------|------------|-------|-------|
| DC-360B | 2.5Mpa | 420L/H | 220V | 1.8KW |
| DC-360B | 4.0Mpa | 420L/H | 220V | 1.8KW |
| DC-360B | 6.0Mpa | 420L/H | 220V | 1.8KW |
| Size:46*27*40cm | | | | |
| Weight: 14kgs | | | | |



| Item no. | Pressure (kg/cm ²) | Flow Volum | Volts | Power |
|-------------|--------------------------------|------------|-------|-------|
| DC-360 | 0-4.0Mpa | 420L/H | 220V | 1.8KW |
| Weight:15kg | | | | |



| Item no. | Pressure (kg/cm ²) | Flow Volum | Volts | Power | Weight |
|-----------------|--------------------------------|------------|-----------|-------|--------|
| 3DSY-25 | 2.5Mpa | 360L/H | 220V/380V | 750W | 25kg |
| 3DSY-40 | 4Mpa | 360L/H | 220V/380V | 750W | 25kg |
| 3DSY-60 | 6Mpa | 360L/H | 220V/380V | 750W | 25kg |
| 3DSY-80 | 8Mpa | 360L/H | 220V/380V | 900W | 27kg |
| 3DSY-100 | 10Mpa | 360L/H | 220V/380V | 900W | 27kg |
| Size:41*27*55cm | | | | | |



| Item no. | Pressure (kg/cm ²) | Flow Volum | Volts | Current |
|------------------|--------------------------------|------------|-------|---------|
| DC-390 | 0-6Mpa | 600L/H | 220V | 6.0A |
| Size: 45*32*58cm | | | | |



| Item no. | Pressure (kg/cm ²) | Flow Volum | Volts | Current |
|------------------|--------------------------------|------------|-----------|---------|
| SDSB-A | 0-4Mpa | 2400L/H | 220V-380V | 5.8A |
| Size: 55*36*69cm | | | | |

Features&Functions:

1.Manual testing pump is the main test instrument of measuring pressure vessel equipment, the highest working pressure of up to 800 kg/cm2. .Within 0 ~ 800 kg/cm2 at any stage of the correct pressure for hydrostatic test, widely used in, chemical industry, construction, plumbing, oil, coal, metallurgy, scientific system, shipbuilding and other industries. Special testing of pressure vessels and pressure equipment, piping, valves, rubber fittings and other pressure device under pressure

A/C Hose Crimper



| Specification | A/C Hose Crimper |
|----------------|-------------------------------|
| Item No. | FS-7842 |
| Crimping Range | 3/8-7/8 |
| Crimping Force | 8T |
| Stroke | 15mm |
| Crimping Type | Hexagon Type |
| Moulds | 8/10/12/6SRB/8SRB/10SRB/12SRB |
| Weight | Approx7kgs |



| Specification | A/C Hose Crimper |
|----------------|------------------|
| Item No. | FS-71550 |
| Crimping Range | 3/8-7/8 |
| Crimping Force | 8T |
| Stroke | 15mm |
| Crimping Type | Hexagon Type |
| Moulds | 8/10/12 |
| Weight | Approx5.5kgs |



| Specification | A/C Hose Crimper |
|----------------|-------------------------------|
| Item No. | FS-7842A |
| Crimping Range | 3/8-7/8 |
| Crimping Force | 8T |
| Stroke | 15mm |
| Crimping Type | Hexagon Type |
| Moulds | 8/10/12/6SRB/8SRB/10SRB/12SRB |
| Packing size | 43*9*32cm |
| Weight | Approx6kgs |

| NO. | Hose Size Inner Diameter(in) | Hose Size Inner Diameter(in) | O.D. with 2 Mpa Standard Hose | The Jaw Size When Grinding Tool Limit Value(mm) |
|-----------|---------------------------------|---------------------------------|----------------------------------|--|
| 6SRB | 5/16" | Φ7.9 DN8 | d:Φ7.5-9 D:Φ14-16 | Φ12.5 |
| 8SRB 6 | 5/16" (Thick walled tube) | Φ7.9 DN8 | d:Φ7.5-12 D:Φ16-20 | Φ14.5 |
| | 13/32" (Thin walled tube) | Φ10.3 DN10 | | |
| 10SRB | 1/2" | Φ12.7 DN15 | d:Φ12-14 D:Φ20-22 | Φ16.5 |
| 12SRB | 5/8" | Φ15.9 DN16 | d:Φ14-16 D:Φ22-24 | Φ21 |
| 8 | 13/32" | Φ10.3 DN10 | d:Φ10-12 D:Φ22-24 | Φ20 |
| 10 | 1/2" | Φ12.7 DN15 | d:Φ12-14 D:Φ22-26 | Φ21 |
| 12 | 5/8" | Φ15.9 DN16 | d:Φ15-17 D:Φ27-30 | Φ24.5 |

Features&Functions:
Seven Moulds Can Be Matched At Will

Hydraulic Crimping Tool



| Specification | Hydraulic crimping tool |
|----------------|--------------------------------------|
| Item No. | YQK-70 |
| Crimping range | 4-70mm ² |
| Crimping force | 8T |
| Crimping type | hexagon |
| Stroke | 10mm |
| Standard die | 4/6/10/16/25/35/50/70mm ² |
| Weight | 2.9kgs |



| Specification | Hydraulic crimping tool |
|----------------|---|
| Item No. | YQK-120 |
| Crimping range | 10-120mm ² |
| Crimping force | 8T |
| Crimping type | hexagon |
| Stroke | 14mm |
| Standard die | 10/16/25/35/50/70/95/120mm ² |
| Weight | 4.2kgs |



| Specification | Hydraulic crimping tool |
|----------------|--|
| Item No. | YQK-240 |
| Crimping range | 16-240mm ² |
| Crimping force | 12T |
| Crimping type | hexagon |
| Stroke | 20mm |
| Standard die | 16/25/35/50/70/95/120/150/185/240mm ² |
| Weight | 6kgs |



| Specification | Hydraulic crimping tool |
|----------------|--|
| Item No. | YQK-300 |
| Crimping range | 16-300mm ² |
| Crimping force | 12T |
| Crimping type | hexagon |
| Stroke | 20mm |
| Standard die | 16/25/35/50/70/95/120/150/185/240/300mm ² |
| Weight | 6.375kgs |

Features&Functions:

YQK-70 is a professional tool for crimping copper and aluminum terminals with hexagonal type and the crimping range is 4-70mm²

YQK-120 is a professional tool for crimping copper and aluminum terminals with hexagonal type and the crimping range is 10-120mm²

YQK-240 is a professional tool for crimping copper and aluminum terminals with hexagonal type and the crimping range is 16-240mm²

YQK-300 is a professional tool for crimping copper and aluminum terminals with hexagonal type and the crimping range is 16-300mm²

Hydraulic Crimping Tool

| Specification | Hydraulic crimping tool |
|----------------|--|
| Item No. | YQ-300C |
| Crimping range | 16-300mm ² |
| Crimping force | 16T |
| Crimping type | hexagon |
| Stroke | 22mm |
| Standard die | 16/25/35/50/70/95/120/150/185/240/300mm ² |
| Weight | 7.5kgs |

| Specification | Hydraulic crimping tool |
|-------------------|--|
| Item No. | KYQ-400 |
| Crimping range | 16-400mm ² |
| Crimping force | 20T |
| Crimping type | hexagon |
| Stroke | 22mm |
| Standard die | 16/25/35/50/70/95/120/150/185/240/300/400mm ² |
| Packing Dimension | 56*23.5*12cm |
| Weight | 9kgs |

| Specification | Hydraulic crimping tool |
|----------------|--|
| Item No. | YQ-400C |
| Crimping range | 16-400mm ² |
| Crimping force | 16T |
| Crimping type | hexagon |
| Stroke | 20mm |
| Standard die | 16/25/35/50/70/95/120/150/185/240/300/400mm ² |
| Weight | 10kgs |

| Specification | Hydraulic crimping tool |
|----------------|--|
| Item No. | CP-150S |
| Crimping range | 16-150mm ² |
| Crimping force | 10T |
| Crimping type | Point clap |
| Stroke | 20mm |
| Standard die | 16/25/35/50/70/95/120/150mm ² |
| Weight | 5kgs |

Features&Functions:

1. It is designed for hydraulic crimping on power cable and wire. The crimped conductor is tested in high conductivity and close contact so that its uneasy to break out and turn hot.
2. Open cut design for convenient operation.
3. Dies are quickly put on tube by double speed unit. Then compression force lift and automatically change to low speed. The operation finished with energy saving and time shorten.
4. The head could be rotated 180 degree freely for narrow space working.
5. Fitted with safety valve, when pressure reaches to limited Max, Value, pressure release automatically to prevent over pressure.
6. Fiberglass insulated handles to prevent accidental electric hitting.
7. Packing case is made from robust integral plastic box.

Note: This crimping tool inside with safety valve, when the pressure out of limit, it could reset automatically.

Hydraulic Crimping Tool



| Specification | Hydraulic crimping tool |
|----------------|--|
| Item No. | KYQ-240(Safety valve inside) |
| Crimping range | 16-240mm ² |
| Crimping force | 10T |
| Crimping type | hexagon |
| Stroke | 18mm |
| Standard die | 16/25/35/50/70/95/120/150/185/240mm ² |



| Specification | Hydraulic crimping tool |
|----------------|--|
| Item No. | ZHO-300(Safety valve inside) |
| Crimping range | 16-300mm ² |
| Crimping force | 10T |
| Crimping type | hexagon |
| Stroke | 16mm |
| Standard die | 16/25/35/50/70/95/120/150/185/240/300mm ² |



| Specification | Hydraulic crimping tool |
|----------------|--|
| Item No. | ZCO-300(Safety valve inside) |
| Crimping range | 16-300mm ² |
| Crimping force | 10T |
| Crimping type | hexagon |
| Stroke | 22mm |
| Standard die | 16/25/35/50/70/95/120/150/185/240/300mm ² |



| Specification | Hydraulic crimping tool |
|----------------|---|
| Item No. | CPO-400(Safety valve inside) |
| Crimping range | 50-400mm ² |
| Crimping force | 12T |
| Crimping type | hexagon |
| Stroke | 22mm |
| Standard die | 50/70/95/120/150/185/240/300/400mm ² |

Features&Functions:

1. It is designed for hydraulic crimping on power cable and wire. The crimped conductor is tested in high conductivity and close contact so that its uneasy to break out and turn hot.
2. Open cut design for convenient operation.
3. Dies are quickly put on tube by double speed unit. Then compression force lift and automatically change to low speed. The operation finished with energy saving and time shorten.
4. The head could be rotated 180 degree freely for narrow space working.
5. Fitted with safety valve, when pressure reaches to limited Max, Value, pressure release automatically to prevent over pressure.
6. Fiberglass insulated handles to prevent accidental electric hitting.
7. Packing case is made from robust integral plastic box.

Note: This crimping tool inside with safety valve, when the pressure out of limit, it could reset automatically.

Hydraulic Crimping Tool



| Specification | Hydraulic crimping tool |
|----------------|---|
| Item No. | ZCO-400(Safety valve inside) |
| Crimping range | 16-400mm ² |
| Crimping force | 12T |
| Crimping type | hexagon |
| Stroke | 32mm |
| Standard die | 50/70/95/120/150/185/240/300/400mm ² |



| Specification | Hydraulic crimping tool |
|----------------|--|
| Item No. | EP-410 |
| Crimping range | 16-300mm ² |
| Crimping force | 12T |
| Crimping type | hexagon |
| Stroke | 32mm |
| Standard die | 35/50/70/95/120/150/185/240/300mm ² |



| Specification | Hydraulic crimping tool |
|----------------|---|
| Item No. | EP-430 |
| Crimping range | 16-400mm ² |
| Crimping force | 12T |
| Crimping type | hexagon |
| Stroke | 32mm |
| Standard die | 50/70/95/120/150/185/240/300/400mm ² |



| Specification | Hydraulic crimping tool |
|----------------|---|
| Item No. | EP-510 |
| Crimping range | 16-400mm ² |
| Crimping force | 13T |
| Crimping type | hexagon |
| Stroke | 38mm |
| Standard die | 50/70/95/120/150/185/240/300/400mm ² |

Features&Functions:

1. It is designed for hydraulic crimping on power cable and wire. The crimped conductor is tested in high conductivity and close contact so that its uneasy to break out and turn hot.
2. Open cut design for convenient operation.
3. Dies are quickly put on tube by double speed unit. Then compression force lift and automatically change to low speed. The operation finished with energy saving and time shorten.
4. The head could be rotated 180 degree freely for narrow space working.
5. Fitted with safety valve, when pressure reaches to limited Max, Value, pressure release automatically to prevent over pressure.
6. Fiberglass insulated handles to prevent accidental electric hitting.
7. Packing case is made from robust integral plastic box.

Note: This crimping tool inside with safety valve, when the pressure out of limit, it could reset automatically.

Hydraulic Crimping Tool



| Specification | Hydraulic crimping tool |
|----------------|--|
| Item No. | HT-300 |
| Crimping range | 16-300mm ² |
| Crimping force | 6T |
| Crimping type | hexagon |
| Stroke | 17mm |
| Standard die | 16/25/35/50/70/95/120/150/185/240/300mm ² |



| Specification | Hydraulic crimping tool |
|----------------|--|
| Item No. | HT-12030 |
| Crimping range | 16-300mm ² |
| Crimping force | 12T |
| Crimping type | hexagon |
| Stroke | 32mm |
| Standard die | 35/50/70/95/120/150/185/240/300mm ² |



| Specification | Hydraulic crimping tool |
|----------------|---|
| Item No. | HT-12032 |
| Crimping range | 16-400mm ² |
| Crimping force | 12T |
| Crimping type | hexagon |
| Stroke | 32mm |
| Standard die | 50/70/95/120/150/185/240/300/400mm ² |



| Specification | Hydraulic crimping tool |
|----------------|---|
| Item No. | HT-12038 |
| Crimping range | 16-400mm ² |
| Crimping force | 12T |
| Crimping type | hexagon |
| Stroke | 38mm |
| Standard die | 50/70/95/120/150/185/240/300/400mm ² |

Features&Functions:

1. It is designed for hydraulic crimping on power cable and wire. The crimped conductor is tested in high conductivity and close contact so that its uneasy to break out and turn hot.
2. Open cut design for convenient operation.
3. Dies are quickly put on tube by double speed unit. Then compression force lift and automatically change to low speed. The operation finished with energy saving and time shorten.
4. The head could be rotated 180 degree freely for narrow space working.
5. Fitted with safety valve, when pressure reaches to limited Max, Value, pressure release automatically to prevent over pressure.
6. Fiberglass insulated handles to prevent accidental electric hitting.
7. Packing case is made from robust integral plastic box.

Note: This crimping tool inside with safety valve, when the pressure out of limit, it could reset automatically.

Hydraulic Crimping Tool



| Specification | Hydraulic crimping head |
|----------------|---|
| Item No. | HT-131H |
| Crimping force | 13T |
| Crimping range | 50-400mm ² |
| Crimping type | hexagon |
| Stroke | 42mm |
| Standard die | 50/70/95/120/150/185/240/300/400mm ² |
| Package size | 35cm*19cm*8cm |



| Specification | Hydraulic crimping head |
|----------------|---|
| Item No. | EP-410H |
| Crimping force | 12T |
| Crimping range | 50-400mm ² |
| Crimping type | hexagon |
| Stroke | 32mm |
| Standard die | 50/70/95/120/150/185/240/300/400mm ² |
| Package size | 34cm*11.5cm*6.5cm |

| Specification | Hydraulic crimping head |
|----------------|---|
| Item No. | EP-430H |
| Crimping force | 12T |
| Crimping range | 50-400mm ² |
| Crimping type | hexagon |
| Stroke | 32mm |
| Standard die | 50/70/95/120/150/185/240/300/400mm ² |
| Package size | 42cm*12cm*26cm |



| Specification | Hydraulic crimping head |
|----------------|---|
| Item No. | EP-510H |
| Crimping force | 13T |
| Crimping range | 50-400mm ² |
| Crimping type | hexagon |
| Stroke | 38mm |
| Standard die | 50/70/95/120/150/185/240/300/400mm ² |
| Package size | 42.2cm*26.5cm*13.3cm |

Features&Functions:

1. It is specially designed for inside and outside power transmission and distribution project, various kinds of connecting terminals, overhead and underground cable lugs with different types, a wide range of crimping dies from 4mm² To 400mm² To suit for different size demand.
2. Crimping high voltage cable sleeve, wire grips, un-insulated terminals, hexagon terminals. Crimping part tight and uneasy to break out in good conductivity.
3. Dies could be ordered and available in any sizes. The main crimping shape is hexagonal, special shape design is provided by special making.
4. The oil pipe coupler fitted with ZG 3/8" thread.
5. Can match with our HHB-700A electric pump or CP-700 manual pump to use.

Hydraulic Crimping Tool



| Specification | Hydraulic crimping head |
|----------------|--|
| Item No. | FYQ-400/500 |
| Crimping force | 25T |
| Crimping range | 16-400mm ² |
| Crimping type | hexagon |
| Stroke | 25mm |
| Standard die | 16/25/35/50/70/95/120/150/185/240/300/400/500mm ² |
| Package size | 19.6cm*18cm*29.1cm |



| Specification | Hydraulic crimping head |
|----------------|--|
| Item No. | CO-630B |
| Crimping force | 30T |
| Crimping range | 150-630mm ² |
| Crimping type | hexagon |
| Stroke | 25mm |
| Standard die | 150/185/240/300/400/500/630mm ² |
| Package size | 33cm*13cm*10cm |



| Specification | Hydraulic crimping head |
|----------------|--|
| Item No. | FYQ-630 |
| Crimping force | 35T |
| Crimping range | 150-630mm ² |
| Crimping type | hexagon |
| Stroke | 25mm |
| Standard die | 150/185/240/300/400/500/630mm ² |
| Package size | 30.5cm*21cm*19.5cm |
| Weight | 17KGS |



| Specification | Hydraulic crimping head |
|----------------|---|
| Item No. | FYQ-1000 |
| Crimping force | 55T |
| Crimping range | 400-1000mm ² |
| Crimping type | hexagon |
| Stroke | 26mm |
| Standard die | 300/400/500/630/800/1000mm ² |
| Package size | 22cm*22.7cm*37.2cm |
| Weight | 26KGS |

Features&Functions:

1. It is specially designed for inside and outside power transmission and distribution project, various kinds of connecting terminals, overhead and underground cable lugs with different types, a wide range of crimping dies from 4mm² To 400mm² To suit for different size demand.
2. Crimping high voltage cable sleeve, wire grips, un-insulated terminals, hexagon terminals. Crimping part tight and uneasy to break out in good conductivity.
3. Dies could be ordered and available in any sizes. The main crimping shape is hexagonal, special shape design is provided by special making.
4. The oil pipe coupler fitted with ZG 3/8" thread.
5. Can match with our HHB-700A electric pump or CP-700 manual pump to use.

Hydraulic Crimping Tool



| Specification | Hydraulic crimping head |
|----------------|--|
| Item No. | CO-300C |
| Crimping force | 10T |
| Crimping range | 16-300mm ² |
| Crimping type | hexagon |
| Stroke | 16mm |
| Standard die | 16/25/35/50/70/95/120/150/185/240/300mm ² |



| Specification | Hydraulic crimping head |
|----------------|--|
| Item No. | CO-300 |
| Crimping force | 10T |
| Crimping range | 16-300mm ² |
| Crimping type | hexagon |
| Stroke | 16mm |
| Standard die | 16/25/35/50/70/95/120/150/185/240/300mm ² |



| Specification | Hydraulic crimping machine |
|----------------|--|
| Item No. | HHY-240F |
| Crimping force | 10T |
| Crimping range | 16-240mm ² |
| Crimping type | hexagon |
| Standard die | 16/25/35/50/70/95/120/150/185/240mm ² |
| Package size | 21cm*18.5cm*34.5cm |
| Weight | Approx 13.7Kgs |



| Specification | Hydraulic crimping head |
|----------------|--|
| Item No. | FTS-240 |
| Crimping force | 16T |
| Crimping range | 16-240mm ² |
| Crimping type | hexagon |
| Stroke | 20mm |
| Standard die | 16/25/35/50/70/95/120/150/185/240mm ² |



| Specification | Hydraulic crimping head |
|----------------|--|
| Item No. | ZHO-300H |
| Crimping force | 10T |
| Crimping range | 16-300mm ² |
| Crimping type | hexagon |
| Stroke | 16mm |
| Standard die | 16/25/35/50/70/95/120/150/185/240/300mm ² |



| Specification | Hydraulic crimping machine |
|----------------|--|
| Item No. | HHY-400F |
| Crimping force | 12T |
| Crimping range | 50-400mm ² |
| Crimping type | hexagon |
| Standard die | 35/50/70/95/120/150/185/240/300/400mm ² |
| Package size | 21.6cm*18.5cm*34.8cm |
| Weight | Approx 17.5Kgs |

Power Transmission Line Compression Tools



| Specification | Hydraulic compressor |
|----------------|----------------------|
| Item No. | CO-60S |
| Crimping force | 60T |
| Crimping range | φ14-32mm(For CU&AL) |
| Size | 34cm*14cm*16cm |
| Weight | 21.5kgs |



| Specification | Hydraulic compressor |
|----------------|----------------------|
| Item No. | CO-100S |
| Crimping force | 100T |
| Crimping range | φ14-52mm(For CU&AL) |
| Size | 37cm*23cm*18cm |
| Piston travel | 24mm |
| Weight | 38kgs |



| Specification | Hydraulic compressor |
|----------------|--|
| Item No. | CO-200 |
| Crimping force | 160T |
| Crimping range | φ14-90mm(For CU&AL) φ14-50mm(For Steel) |
| Crimping type | hexagon |
| Piston travel | 35mm |
| Weight | 38kgs |



| Specification | Hydraulic compressor |
|----------------|--|
| Item No. | CO-200S |
| Crimping force | 200T |
| Crimping range | φ14-90mm(For CU&AL) φ14-50mm(For Steel) |
| Crimping type | hexagon |
| Piston travel | 30mm |
| Weight | 100kgs |

Features&Functions:

1. It is designed for crimping overhead tension sleeve110KV and also underground cable connecting.
2. Max, sleeve size dia 76mm. Wide crimping range and less crimping times could reduce crimping distortion and control elongation.
3. Dual active hydraulic cylinder could prevent spring from elastic fatigue and avoid trouble of slow reset.
4. Reset hydraulic cylinder could shorten piston reset time.
5. Moveable dies could assist operator to take out dies easily after crimping.
6. Rotating die cover could be open and close quickly to make operation and position much easier.
7. Simple design for easy maintenance.
8. Only work with big flow dual active hydraulic pump.

Power Transmission Line Compression Machine



| Specification | Hydraulic Wire Rope Press Machine |
|----------------|-----------------------------------|
| Item No. | YSB-60 |
| Crimping force | 60T |
| Crimping range | φ3-12mm (steel wire rope) |
| Apply for | φ3/φ4/φ5/φ6/φ8/φ9/φ10/φ11/φ12.5mm |
| Weight | Approx32kgs |



| Specification | Hydraulic Wire Rope Press Machine |
|----------------|---|
| Item No. | YTJ-135 |
| Crimping force | 60T |
| Crimping range | φ3-18mm (steel wire rope) |
| Apply for | φ3/φ4/φ5/φ6/φ8/φ9/φ10/φ11/φ12/φ13/φ14/φ15/φ16/φ17/φ18mm |
| Weight | Approx60kgs |



| Specification | Hydraulic Wire Rope Press Machine |
|----------------|-----------------------------------|
| Item No. | YTJ-6012C |
| Crimping force | 60T |
| Crimping range | φ3-12mm (steel wire rope) |
| Apply for | φ3/φ4/φ5/φ6/φ8/φ9/φ10/φ11/φ12.5mm |
| Weight | Approx75kgs |



| Specification | Hydraulic Wire Rope Press Machine |
|----------------|---|
| Item No. | YTJ-10018C |
| Crimping force | 100T |
| Crimping range | φ3-18mm (steel wire rope) |
| Apply for | φ3/φ4/φ5/φ6/φ8/φ9/φ10/φ11/φ12/φ13/φ14/φ15/φ16/φ17/φ18mm |
| Weight | Approx126kgs |



| Specification | HHydraulic Wire Rope Press Machine |
|----------------|------------------------------------|
| Item No. | YTJ-20022C |
| Crimping force | 200T |
| Crimping range | φ3-22mm (steel wire rope) |
| Weight | Approx 500kgs |

Hydraulic Rebar Cutter



| Specification | Hydraulic rebar cutter |
|---------------|------------------------|
| Item No. | SC-12 |
| Cutting range | 4-12mm |
| Cutting force | 6T |
| Stroke | 11mm |
| Weight | 1.6kgs |



| Specification | Hydraulic rebar cutter |
|---------------|------------------------|
| Item No. | SC-16 |
| Cutting range | 4-16mm |
| Cutting force | 8T |
| Stroke | 17mm |
| Weight | 4kgs |



| Specification | Hydraulic rebar cutter |
|---------------|------------------------|
| Item No. | SC-22 |
| Cutting range | 4-22mm |
| Cutting force | 16T |
| Stroke | 22mm |
| Weight | 6kgs |



| Specification | Hydraulic rebar cutter |
|---------------|------------------------|
| Item No. | SC-25 |
| Cutting range | 4-25mm |
| Cutting force | 20T |
| Stroke | 25mm |
| Weight | 6kgs |

Features&Functions:

- 1 Hydraulic rebar cutter is designed for cutting steel bar.
- 2 Cut opening design for easy opening.
- 3 Dual speed unit quickly pushes knife die to cutting workpiece.
Then cutting force lift and automatically switch to low speed.
Save time and energy in cutting.
- 4 Cutting head could be freely rotated 180° For working at narrow place.
- 5 Integral formed plastic box which looks nice and practical is adopted for package way.

Hydraulic Rebar Cutter



| Specification | Hydraulic rebar cutter |
|---------------|------------------------|
| Item No. | RC-16 |
| Cutting range | 4-16mm |
| Cutting force | 8T |
| Weight | 2.2kgs |



| Specification | Hydraulic rebar cutter |
|---------------|------------------------|
| Item No. | RC-22 |
| Cutting range | 4-22mm |
| Cutting force | 16T |
| Weight | 4.2kgs |



| Specification | Hydraulic rebar cutter |
|---------------|------------------------|
| Item No. | RC-25 |
| Cutting range | 4-25mm |
| Cutting force | 16T |
| Weight | 5.4kgs |



| Specification | Hydraulic rebar cutter |
|---------------|------------------------|
| Item No. | HPB-22 |
| Cutting range | 8-22mm |
| Cutting force | 30T |
| Weight | 4.2kgs |

Features&Functions:

- 1 Hydraulic rebar cutter is designed for cutting steel bar.
- 2 Cut opening design for easy opening.
- 3 Dual speed unit quickly pushes knife die to cutting workpiece.
Then cutting force lift and automatically switch to low speed.
Save time and energy in cutting.
- 4 Cutting head could be freely rotated 180° For working at narrow place.
- 5 Integral formed plastic box which looks nice and practical is adopted for package way.

Hydraulic Cable Cutter



| Specification | Hydraulic cable cutter |
|------------------|---|
| Item No. | CPC-20A |
| Cutting force | 4T |
| Cutting capacity | Steel Wire Strand/Tel cable /ACSR Φ 20mm |
| Weight | 2.2kgs |



| Specification | Hydraulic cable cutter |
|------------------|------------------------------------|
| Item No. | CPC-30A |
| Cutting force | 6T |
| Cutting capacity | Tel cable /Cu/Al cable Φ 30mm |
| Weight | 6kgs |



| Specification | Hydraulic cable cutter |
|------------------|--|
| Item No. | CPC-40A |
| Cutting force | 7T |
| Cutting capacity | Steel Wire Strand Φ 25mm /CU/AL Cable Φ 40mm /ACSR Φ 40mm |
| Weight | 6kgs |



| Specification | Hydraulic cable cutter |
|------------------|---|
| Item No. | CPC-50A |
| Cutting force | 7T |
| Cutting capacity | Steel Wire Strand Φ 30mm /Tel cable Φ 50mm/ACSR Φ 50mm |
| Weight | 6.2kgs |



| Specification | Hydraulic cable cutter |
|------------------|-------------------------------------|
| Item No. | CPC-50 |
| Cutting force | 8T |
| Cutting capacity | Copper cable:50mm/Amored Cable 50mm |
| Weight | 6.6kgs |



| Specification | Hydraulic cable cutter |
|------------------|-------------------------------------|
| Item No. | CPC-75 |
| Cutting force | 8T |
| Cutting capacity | Copper cable:75mm/Amored Cable 75mm |
| Weight | 9.2kgs |



| Specification | Hydraulic cable cutter |
|------------------|---|
| Item No. | CPC-85 |
| Cutting force | 8T |
| Cutting capacity | Copper cable: Φ 85mm/Amored Cable: Φ 85mm |
| Weight | 9.2kgs |



| Specification | Hydraulic cable cutter |
|------------------|--|
| Item No. | CPC-95 |
| Cutting force | 10T |
| Cutting capacity | Copper cable: Φ 85mm/Amored Cable Φ 85mm |
| Weight | 10kgs |

Hydraulic Cable Cutter



| Specification | Hydraulic cable cutter |
|------------------|---|
| Item No. | CPC-20H |
| Cutting force | 4T |
| Cutting capacity | ACSR Φ 18mm; Armoured Cu/Al cable Φ 20mm; steel wire rope Φ 20mm |
| Weight | 5.9kgs |



| Specification | Hydraulic cable cutter |
|------------------|--|
| Item No. | CPC-30H |
| Cutting force | 7T |
| Cutting capacity | Armoured Cu/Al cable/Telephone cable Φ 30mm |
| Weight | 3.5kgs |



| Specification | Hydraulic cable cutter |
|------------------|----------------------------------|
| Item No. | CPC-50H |
| Cutting force | 7T |
| Cutting capacity | Armoured Cu/Al cable Φ 50mm |
| Weight | 6.5kgs |



| Specification | Hydraulic cable cutter |
|------------------|----------------------------------|
| Item No. | CPC-75H |
| Cutting force | 8T |
| Cutting capacity | Armoured Cu/Al cable Φ 75mm |
| Weight | 6.8kgs |



| Specification | Hydraulic cable cutter |
|------------------|----------------------------------|
| Item No. | CPC-85H |
| Cutting force | 10T |
| Cutting capacity | Armoured Cu/Al cable Φ 85mm |
| Weight | 12.1kgs |



| Specification | Hydraulic cable cutter |
|------------------|----------------------------------|
| Item No. | CPC-95H |
| Cutting force | 10T |
| Cutting capacity | Armoured Cu/Al cable Φ 95mm |
| Weight | 8kgs |

Features&Functions:

- 1 High pressure direct type hydraulic cutting tool
- 2 Easy to operate and carry, suitable for high-altitude operations.
- 3 All blades are easily replaceable.
- 4 180 degree rotatable heads allow easy cutting position.

Hydraulic Cable Cutter



| Specification | Hydraulic cable cutter |
|------------------|--|
| Item No. | CPC-100H |
| Cutting force | 11T |
| Cutting capacity | Armoured Cu/Al cable $\Phi 100\text{mm}$ |
| Packing size | 20*51*11cm |
| Weight | 9kgs |



| Specification | Hydraulic cable cutter |
|------------------|--|
| Item No. | CPC-132H |
| Cutting force | 15T |
| Cutting capacity | Armoured Cu/Al cable $\Phi 132\text{mm}$ |
| Packing size | 67*17*10.7cm |
| Weight | 14.7kgs |



| Specification | Hydraulic cable cutter |
|------------------|--|
| Item No. | CPC-160H |
| Cutting force | 18T |
| Cutting capacity | Armoured Cu/Al cable $\Phi 160\text{mm}$ |
| Packing size | 32.5*81*11cm |
| Weight | 23.5kgs |



| Specification | Hydraulic cable cutter |
|------------------|---|
| Item No. | CPC-65C |
| Cutting force | 60KN |
| Cutting capacity | Armoured Cu/Al cable $\Phi 65\text{mm}$ |
| Weight | 5kgs |



| Specification | Hydraulic cable cutter |
|------------------|---|
| Item No. | CPC-85C |
| Cutting force | 60KN |
| Cutting capacity | Armoured Cu/Al cable $\Phi 85\text{mm}$ |
| Weight | 5kgs |



| Specification | Hydraulic cable cutter |
|------------------|--|
| Item No. | CPC-105C |
| Cutting force | 120KN |
| Cutting capacity | Armoured Cu/Al cable $\Phi 105\text{mm}$ |
| Weight | 8.2kgs |



| Specification | Hydraulic cable cutter |
|------------------|--|
| Item No. | CPC-120C |
| Cutting force | 120KN |
| Cutting capacity | Armoured Cu/Al cable $\Phi 120\text{mm}$ |
| Weight | 9.1kgs |

Features&Functions:

- 1 High pressure direct type hydraulic cutting tool
- 2 Easy to operate and carry, suitable for high-altitude operations.
- 3 All blades are easily replaceable.
- 4 180 degree rotatable heads allow easy cutting position.

Hydraulic Cable Cutter



| Specification | Hydraulic cable cutter |
|------------------|--|
| Item No. | BC-40C |
| Cutting force | 8T |
| Cutting capacity | Armoured Cu/Al cable $\Phi 40\text{mm}$ ACSR $\Phi 40\text{mm}$ Strand Wire $\Phi 12\text{mm}$ |
| Weight | 4.8kgs |



| Specification | Hydraulic cable cutter |
|------------------|--|
| Item No. | BC-50C |
| Cutting force | 8T |
| Cutting capacity | Armoured Cu/Al cable $\Phi 50\text{mm}$ ACSR $\Phi 50\text{mm}$ Strand Wire $\Phi 12\text{mm}$ |
| Weight | 5.4kgs |



| Specification | Hydraulic cable cutter |
|------------------|--|
| Item No. | BC-120C |
| Cutting force | 12T |
| Cutting capacity | Armoured Cu/Al cable $\Phi 120\text{mm}$ |
| Weight | 9.1kgs |

Features&Functions:

- 1 High pressure direct type hydraulic cutting tool
- 2 Easy to operate and carry, suitable for high-altitude operations.
- 3 All blades are easily replaceable.
- 4 180 degree rotatable heads allow easy cutting position.

Ratchet Cable Cutter



| Specification | Ratchet cable cutter |
|------------------|--|
| Item No. | J13 |
| Cutting capacity | ACSR 720mm ² ; Steel Wire Strand 150mm ² |
| Weight | 1.95kgs |



| Specification | Ratchet cable cutter |
|------------------|--|
| Item No. | J25 |
| Cutting capacity | ACSR 800mm ² ; Steel Wire Strand 150mm ² |
| Weight | 2.8kgs |



| Specification | Ratchet cable cutter |
|------------------|--|
| Item No. | J30 |
| Cutting capacity | ACSR 630mm ² ; Steel Wire Strand 100mm ² |
| Weight | 1.95kgs |



| Specification | Ratchet cable cutter |
|------------------|--|
| Item No. | J40 |
| Cutting capacity | CU-AL Armoured cable 300mm ² ; Cu-AL cable 300mm ² |
| Weight | 1.3kgs |



| Specification | Ratchet cable cutter |
|------------------|---|
| Item No. | J50 |
| Cutting capacity | ACSR: 1440mm ² ; Strand wire: 240mm ² |
| Weight | 3kgs |



| Specification | Ratchet cable cutter |
|------------------|---|
| Item No. | J52 |
| Cutting capacity | CU-AL Armoured cable Φ 50mm; Cu-AL cable Φ 50mm |
| Weight | 3kgs |

Features&Functions:

1. Stretchable handle lead to low manual labour force.
2. Made of high quality alloy steel, could be durabl for long time use.
3. It is easy to cut as assembled with bracket.
4. It is also easy for returning and retract midway.

Ratchet Cable Cutter



| Specification | Ratchet cable cutter |
|------------------|--|
| Item No. | J75 |
| Cutting capacity | CU-AL Armoured cable Φ75mm;3X120 of Tel cable |
| Weight | 3.6kgs |



| Specification | Ratchet cable cutter |
|------------------|---|
| Item No. | J95 |
| Cutting capacity | CU-AL Armoured cable 3x185mm ² Or the dia Bellow Φ95mm |
| Weight | 5kgs |



| Specification | Ratchet cable cutter |
|------------------|--|
| Item No. | J100 |
| Cutting capacity | CU-AL Armoured cable 3x300mm ² Or the dia Bellow Φ100mm |
| Weight | 6.25kgs |



| Specification | Ratchet cable cutter |
|------------------|-----------------------------|
| Item No. | J160 |
| Cutting capacity | CU-AL Armoured cable Φ160mm |
| Weight | 11.1kgs |



| Specification | Ratchet cable cutter |
|------------------|-----------------------------|
| Item No. | J130 |
| Cutting capacity | CU-AL Armoured cable Φ130mm |
| Weight | 7.5kgs |

Features&Functions:

1. Stretchable handle lead to low manual labour force.
2. Made of high quality alloy steel, could be durabl for long time use.
3. It is easy to cut as assembled with bracket.
4. It is also easy for returning and retract midway.

Ratchet Cable Cutter



| Specification | Ratchet cable cutter |
|------------------|-----------------------------------|
| Item No. | CC-400 |
| Cutting capacity | CU-AL cable $\leq 400\text{mm}^2$ |
| Weight | 1.2kgs |



| Specification | Ratchet cable cutter |
|------------------|-----------------------------------|
| Item No. | CC-325 |
| Cutting capacity | CU-AL cable $\leq 240\text{mm}^2$ |
| Weight | 0.55kgs |



| Specification | Ratchet cable cutter |
|------------------|-----------------------------------|
| Item No. | CC-500 |
| Cutting capacity | CU-AL cable $\leq 500\text{mm}^2$ |
| Weight | 1.63kgs |

| Specification | Ratchet cable cutter |
|------------------|----------------------|
| Item No. | CC-250L |
| Cutting capacity | 250mm^2 |
| Weight | 1.8kgs |



| Specification | Ratchet cable cutter |
|------------------|----------------------|
| Item No. | CC-100L |
| Cutting capacity | 100mm^2 |
| Weight | 0.8kgs |



| Specification | Ratchet cable cutter |
|------------------|----------------------|
| Item No. | LK-125 |
| Cutting capacity | 125mm^2 |
| Weight | 0.7kgs |



| Specification | Ratchet cable cutter |
|------------------|----------------------|
| Item No. | CC-500L |
| Cutting capacity | 500mm^2 |
| Weight | 2.9kgs |



| Specification | Ratchet cable cutter |
|------------------|----------------------|
| Item No. | LK-250 |
| Cutting capacity | 250mm^2 |
| Weight | 1.5kgs |



| Specification | Ratchet cable cutter |
|------------------|----------------------|
| Item No. | LK-500 |
| Cutting capacity | 500mm^2 |
| Weight | 2.8kgs |

Features&Functions:

1. Stretchable handle lead to low manual labour force.
2. Made of high quality alloy steel, could be durabl for long time use.
3. It is easy to cut as assembled with bracket.
4. It is also easy for returning and retract midway.

Ratchet Cable Cutter



| Specification | Ratchet cable cutter |
|------------------|---|
| Item No. | XD-75A |
| Cutting capacity | CU-AL Armoured cable $\phi 75\text{mm}$ |
| Weight | 3.6kgs |



| Specification | Ratchet cable cutter |
|------------------|---|
| Item No. | XD-520A |
| Cutting capacity | CU-AL Armoured cable $\phi 40\text{mm}$; ACSR 600mm^2 ; Deformed Steel Bars: $\phi 10\text{mm}$; steel wire rope: $\phi 8-16\text{mm}$ |
| Weight | 1.9kgs |



| Specification | Ratchet cable cutter |
|------------------|--|
| Item No. | XD-J-40 |
| Cutting capacity | ACSR : $\phi 40\text{mm}$, CU-AL Armoured cable $\phi 100\text{mm}$ |
| Weight | 3.5kgs |



| Specification | Ratchet cable cutter |
|------------------|--|
| Item No. | XD-130A |
| Cutting capacity | CU-AL Armoured cable $\phi 130\text{mm}$ |
| Weight | 14kgs |



| Specification | Ratchet cable cutter |
|------------------|--|
| Item No. | XD-100A |
| Cutting capacity | CU-AL Armoured cable $\phi 100\text{mm}$ |
| Weight | 6.3kgs |



| Specification | Ratchet cable cutter |
|------------------|--|
| Item No. | XD-160A |
| Cutting capacity | CU-AL Armoured cable $\phi 160\text{mm}$ |
| Weight | 6.3kgs |

Hydraulic Flange Spreader



| Specification | Flange spreader |
|---------------------|-----------------|
| Item No. | YP-30 |
| Capacity | 8T |
| Tip Clearance | 11mm |
| Max spread distance | 50mm |
| Stroke | 15mm |
| Weight | 4kgs |



| Specification | Flange spreader |
|---------------------|-----------------|
| Item No. | YP-55 |
| Capacity | 14T |
| Tip Clearance | 13mm |
| Max spread distance | 63mm |
| Stroke | 26mm |
| Weight | 7kgs |



| Specification | Flange spreader |
|---------------------|-----------------|
| Item No. | FYP-30 |
| Capacity | 8T |
| Tip Clearance | 11mm |
| Max spread distance | 50mm |
| Stroke | 15mm |
| Weight | 2.2kgs |



| Specification | Flange spreader |
|---------------------|-----------------|
| Item No. | FYP-55 |
| Capacity | 14T |
| Tip Clearance | 13mm |
| Max spread distance | 63mm |
| Stroke | 26mm |
| Weight | 4.4kgs |

Features&Functions:

Friction-free, smooth and parallel wedge movement with unique interlock wedge design. Eliminates flange damage and risk of spreading arm failure.
 Stepped spreader arm design – each step can spread under full load.
 Requires very small access gap of only 6 mm.
 Includes safety block and stepped blocks.

Hydraulic Flange Spreader



| Specification | Mechanical Flange spreader |
|---------------------|----------------------------|
| Item No. | FSH-8 |
| Capacity | 8T |
| Tip Clearance | 8mm |
| Max spread distance | 81mm |
| Weight | 9.6kgs |



| Specification | Flange spreader |
|---------------------|-------------------|
| Item No. | FS-14 |
| Capacity | 14T |
| Tip Clearance | 6mm |
| Max spread distance | 81mm |
| Avaliable oil | 70cm ² |
| Weight | 13.6kgs |



| Specification | Flange spreader |
|---------------------|-----------------------|
| Item No. | FSH-14 |
| Capacity | 14T |
| Tip Clearance | 6mm |
| Max spread distance | 81mm |
| Avaliable oil | According to the pump |
| Weight | 8kgs |



| Specification | Flange spreader |
|---------------------|-------------------|
| Item No. | FSH-14M |
| Capacity | 14T |
| Tip Clearance | 6mm |
| Max spread distance | 80mm |
| Avaliable oil | 70cm ² |
| Weight | 11.6kgs |

Features&Functions:

Friction-free, smooth and parallel wedge movement with unique interlock wedge design. Eliminates flange damage and risk of spreading arm failure.

Stepped spreader arm design – each step can spread under full load.

Requires very small access gap of only 6 mm.

Includes safety block and stepped blocks.

Self-contained Hydraulic Wedge Spreader FS-14

1.Manual hydraulic operation.

2.Use stepped blocks to increase wedge opening up to 81 mm.

3.Safe and reliable hydraulic system.

Hydraulic Wedge Spreader FSH-14

1.Use stepped blocks to increase wedge opening up to 81 mm.

2.Supplied with ZG 3/8 male coupler and dust cap.

3.Operated by hydraulic pump with rated pressure of 700 bar.

Hydraulic Nut Splitter



| Specification | Hydraulic Nut Splitter |
|---------------|------------------------|
| Item No. | JK-24 |
| Force | 8T |
| Stroke | 19mm |
| Nut Range | 14-36mm |
| Thread | M8-M24 |
| Weight | 3.8kgs |



| Specification | Hydraulic Nut Splitter |
|---------------|------------------------|
| Item No. | JK-27 |
| Force | 12T |
| Stroke | 22mm |
| Nut Range | 14-41mm |
| Thread | M8-M27 |
| Weight | 5kgs |



| Specification | Hydraulic Nut Splitter |
|---------------|------------------------|
| Item No. | JK-30 |
| Force | 14T |
| Stroke | 25mm |
| Nut Range | 17-46mm |
| Thread | M10-M30 |
| Weight | 5kgs |



| Specification | Hydraulic Nut Splitter |
|---------------|------------------------|
| Item No. | JK-24F |
| Force | 8T |
| Stroke | 19mm |
| Nut Range | 14-36mm |
| Thread | M8-M24 |
| Weight | 2.8kgs |



| Specification | Seperable Hydraulic Nut Splitter |
|---------------|----------------------------------|
| Item No. | JK-27F |
| Force | 12T |
| Stroke | 22mm |
| Nut Range | 14-41mm |
| Thread | M8-M27 |
| Weight | 4kgs |



| Specification | Seperable Hydraulic Nut Splitter |
|---------------|----------------------------------|
| Item No. | JK-30F |
| Force | 14T |
| Stroke | 26mm |
| Nut Range | 17-46mm |
| Thread | M10-M30 |
| Weight | 5.8kgs |

Features&Functions:

- 1.Compact and ergonomic design, easy to use
- 2.Single-acting, spring return cylinder
3. Applications include service trucks, piping industry, tank Cleaning, petrochemical, steel construction, mining, railways etc.
- 4.Two models of inbuilt type – Easy to operate at remote places and at heights. Cost saving, highly portable and no need for extra pump, hoses etc.

Seperable Hydraulic Nut Splitter



| Item no. | Output(T) | Thread(mm) | Hexagon nut Size(mm) | Weight |
|----------|-----------|------------|----------------------|--------|
| NC-1319 | 5 | M6-M12 | 10-19 | 1.2 |
| NC-1924 | 10 | M12-M16 | 19-24 | 2.0 |
| NC-2432 | 15 | M16-M22 | 24-32 | 3.0 |
| NC-3241 | 20 | M22-M27 | 32-41 | 4.4 |
| NC-4150 | 35 | M27-M33 | 41-50 | 8.2 |
| NC-5060 | 50 | M33-M39 | 50-60 | 11.8 |
| NC-6075 | 90 | M39-M48 | 60-75 | 34.1 |

Features&Functions:

- 1.Designed for removal of rusted nuts
- 2. Single-acting, spring return cylinder with hand operation function.
- 3. Applications include service trucks, piping industry, tank Cleaning, petrochemical, steel construction, mining, railways etc.
- 4.4.Two models of inbuilt type – Easy to operate at remote places and at heights. Cost saving, highly portable and no need for extra pump, hoses etc.

Hydraulic Rescue Cutting Tools



| Specification | Hydraulic rescue tool |
|-----------------------|-----------------------|
| Item No. | KJI-4000K |
| Max open distance | 360mm |
| Working pressure | 63Mpa |
| Rated expansion force | 42KN |
| Max Expansion | 120KN |
| No load open time | ≤30S |
| No load close time | ≤25S |
| Weight | Approx19kg |



| Specification | Hydraulic rescue cutter |
|----------------------|-------------------------|
| Item No. | KJI-3000K |
| Max open distance | 115mm |
| Working pressure | 72Mpa |
| Max cutting capacity | φ28mm |
| No load open time | ≤30S |
| No load close time | ≤25S |
| Weight | Approx17.4kg |

| Specification | Hydraulic rescue tool |
|-----------------------|---------------------------------|
| Item No. | KJI-2000CB |
| Max open distance | 360mm |
| Working pressure | 63Mpa |
| Max cutting capacity | Steel plate:φ15mm;Compass:φ25mm |
| Rated expansion force | 32KN |
| No load open time | ≤25S |
| No load close time | ≤30S |
| Weight | Approx13.6kg |



KJI-2000CB



| Specification | Hydraulic rescue cutter |
|----------------------|---------------------------------|
| Item No. | KJI-20CB |
| Max open distance | 160mm |
| Working pressure | 63Mpa |
| Max cutting capacity | Steel plate:φ10mm;Compass:φ20mm |
| Cutting force | 18T |
| Expansion distance | 160mm |
| Rated expansion | 24KN |
| No load open time | ≤9Times |
| No load close time | ≤11Times |
| Handle force | ≤300N |
| Weight | 15kgs |

Features&Functions:

- 1.Traffic accident rescue,earthquake disaster rescue,accident rescue.
- 2.Suitable for mobile rescue operation.
- 3.Prying doors and deforming metal strcutures. Cut off metal structures,vehicle parts,pipes and sheets.

Hydraulic Wire Rope Cutter



| Specification | Hydraulic Wire Rope Cutter |
|-------------------|----------------------------|
| Item No. | QY-30 |
| Range | Max30mm |
| Piston Proceeding | ≥38mm |
| Power Proceeding | 10mm |
| Shearing Force | 7.5T |
| Oil capacity | 0.19L |
| Hand Shank Force | ≤25kgf |
| Weight | Approx16kg |
| Package Size | 41.3*14*21.7cm |



| Specification | Hydraulic Wire Rope Cutter |
|-------------------|----------------------------|
| Item No. | QY-48 |
| Range | Max48mm |
| Piston Proceeding | ≥60mm |
| Power Proceeding | 8.8mm |
| Force | 20T |
| Oil capacity | 0.30L |
| Hand Shank Force | ≤39kgf |
| Weight | Approx32kg |
| Package Size | 53.2*18.3*25.8cm |

Features&Functions:

- 1.Designed for manually cutting wires with hydraulic power.
- 2.Gives a clean cut with a few strokes of the handlewithout requiring any outside power.
- 3.Can be carried to the job and placed anywhere, no firm base is required.Essential for cutting andsplicing wire rope .
- 4.Be sure to unscrew the die plu before use and to retighten it after use.

Hydraulic Gear Puller



| Specification | Hydraulic Gear Puller |
|---------------|-----------------------|
| Item No. | DYF-5 |
| Output | 5T |
| Max spread | 200mm |
| Max stroke | 50mm |
| Max reach | 140mm |
| Weight | 7.5kgs |



| Specification | Hydraulic Gear Puller |
|---------------|-----------------------|
| Item No. | DYF-10 |
| Output | 10T |
| Max spread | 250mm |
| Max stroke | 50mm |
| Max reach | 160mm |
| Weight | 11kgs |



| Specification | Hydraulic Gear Puller |
|---------------|-----------------------|
| Item No. | DYF-15 |
| Output | 15T |
| Max spread | 300mm |
| Max stroke | 50mm |
| Max reach | 180mm |
| Weight | 15.5kgs |



| Specification | Hydraulic Gear Puller |
|---------------|-----------------------|
| Item No. | DYF-20 |
| Output | 20T |
| Max spread | 350mm |
| Max stroke | 50mm |
| Max reach | 200mm |
| Weight | 19kgs |



| Specification | Hydraulic Gear Puller |
|---------------|-----------------------|
| Item No. | DYF-30 |
| Output | 30T |
| Max spread | 400mm |
| Max stroke | 50mm |
| Max reach | 200mm |
| Weight | 25kgs |



| Specification | Hydraulic Gear Puller |
|---------------|-----------------------|
| Item No. | DYF-50 |
| Output | 50T |
| Max spread | 500mm |
| Max stroke | 60mm |
| Max reach | 200mm |
| Weight | 35kgs |

Features&Functions:

1. Inbuilt Safety Relief Valve prevents Accidental Over pressurization of the puller.
2. 360 degree rotary handle Swivel Clevis allows pumping from all directions.
3. Spring loaded live centering cone allows easy centering of puller on shaft.
5. 5, 10, 15 & 20 ton sets are supplied in a plastic carrying case, 30 & 50 ton sets are supplied in a Ply wooden box.
6. The jaws are made of high strength, heat treated steel alloy for safety and durability.

Hydraulic Gear Puller



| Specification | Hydraulic Gear Puller |
|---------------|-----------------------|
| Item No. | YLX-5 |
| Output | 5T |
| Max spread | 200mm |
| Max stroke | 50mm |
| Max reach | 140mm |
| Weight | 8kgs |



| Specification | Hydraulic Gear Puller |
|---------------|-----------------------|
| Item No. | YLX-10 |
| Output | 10T |
| Max spread | 250mm |
| Max stroke | 60mm |
| Max reach | 160mm |
| Weight | 11kgs |



| Specification | Hydraulic Gear Puller |
|---------------|-----------------------|
| Item No. | YLX-20 |
| Output | 20T |
| Max spread | 350mm |
| Max stroke | 70mm |
| Max reach | 195mm |
| Weight | 18kgs |



| Specification | Hydraulic Gear Puller |
|---------------|-----------------------|
| Item No. | YLX-30 |
| Output | 30T |
| Max spread | 400mm |
| Max stroke | 60mm |
| Max reach | 250mm |
| Weight | 23kgs |



| Specification | Hydraulic Gear Puller |
|---------------|-----------------------|
| Item No. | YLX-50 |
| Output | 50T |
| Max spread | 500mm |
| Max stroke | 60mm |
| Max reach | 200mm |
| Weight | 34kgs |

Features&Functions:

1. Inbuilt Safety Relief Valve prevents Accidental Over pressurization of the puller.
2. 360 degree rotary handle Swivel Clevis allows pumping from all directions.
3. Spring loaded live centering cone allows easy centering of puller on shaft.
5. 5, 10, 15 & 20 ton sets are supplied in a plastic carrying case, 30 & 50 ton sets are supplied in a Ply wooden box.
6. The jaws are made of high strength, heat treated steel alloy for safety and durability.

Hydraulic Gear Puller



| Specification | Hydraulic Gear Puller |
|---------------|-----------------------|
| Item No. | FYD-5 |
| Output | 5T |
| Max spread | 200mm |
| Max stroke | 50mm |
| Max reach | 140mm |
| Weight | 6.6kgs |



| Specification | Hydraulic Gear Puller |
|---------------|-----------------------|
| Item No. | FYD-10 |
| Output | 10T |
| Max spread | 250mm |
| Max stroke | 50mm |
| Max reach | 160mm |
| Weight | 10.5kgs |



| Specification | Hydraulic Gear Puller |
|---------------|-----------------------|
| Item No. | FYD-15 |
| Output | 15T |
| Max spread | 300mm |
| Max stroke | 50mm |
| Max reach | 180mm |
| Weight | 16kgs |



| Specification | Hydraulic Gear Puller |
|---------------|-----------------------|
| Item No. | FYD-20 |
| Output | 20T |
| Max spread | 350mm |
| Max stroke | 50mm |
| Max reach | 200mm |
| Weight | 16kgs |



| Specification | Hydraulic Gear Puller |
|---------------|-----------------------|
| Item No. | FYD-30 |
| Output | 30T |
| Max spread | 400mm |
| Max stroke | 50mm |
| Max reach | 200mm |
| Weight | 23kgs |



| Specification | Hydraulic Gear Puller |
|---------------|-----------------------|
| Item No. | FYD-50 |
| Output | 50T |
| Max spread | 500mm |
| Max stroke | 60mm |
| Max reach | 200mm |
| Weight | 34kgs |

Features&Functions:

1. Inbuilt Safety Relief Valve prevents Accidental Over pressurization of the puller.
2. 360 degree rotary handle Swivel Clevis allows pumping from all directions.
3. Spring loaded live centering cone allows easy centering of puller on shaft.
4. Light weight, compact, safe and easy to carry. One man operation & is best suited for all industries.
5. Can be operated by hand pump, air pump, electric pump or gasoline pump.

Hydraulic Hole Digger



| Specification | Hydraulic hole digger |
|-----------------------|---|
| Item No. | SYK-8A |
| Output | 8T |
| Punching thickness | soft metal sheet below 3mm stainless steel below 1.6mm |
| Punching range | 16-60mm |
| Standard punching die | 16/20/26.2/32.6/39/51mm |
| Weight | 11kgs |



| Specification | Hydraulic hole digger |
|-----------------------|---|
| Item No. | SYK-8B |
| Output | 8T |
| Punching thickness | soft metal sheet below 3mm stainless steel below 1.6mm |
| Punching range | 16-60mm |
| Standard punching die | 22/27.5/34/43/49/60mm |
| Weight | 11kgs |



| Specification | Hydraulic hole digger |
|-----------------------|---|
| Item No. | SYK-15 |
| Output | 15T |
| Punching thickness | soft metal sheet below 4mm stainless steel below 2mm |
| Punching range | 16-114mm |
| Standard punching die | 63/76/89/101/114mm |
| Weight | 20kgs |



| Specification | Hydraulic hole digger |
|--------------------|---|
| Item No. | SYK-30 |
| Output | 30T |
| Punching thickness | soft metal sheet below 4mm stainless steel below 2mm |
| Punching range | 110-250mm |
| Weight | 8.5kgs |

Features&Functions:

1. The finished distributor, on-off case and plate can change the specification At any time. It can change the size of the tools simply.
2. We can make the hydraulic punch tool according to customer's requirement,Quick delivery.
3. When order rectangle and square mould of the punch tool, please measure the correct dimension.
4. Wide hole making range. It could be used on switchboard, power transmission Panel, meter plate, steel plate to big hole or punch hole. Operate conveniently, be punched holes smooth without burr.

Hydraulic Hole Puncher



| Specification | Hydraulic hole puncher |
|-----------------------|---|
| Item No. | SYD-25 |
| Output | 5T |
| Punching thickness | soft metal sheet below 1.5mm stainless steel below 1mm |
| Throat depth | 70mm |
| Punching range | 6-25mm |
| Standard punching die | 25mm |
| Weight | 4.3kgs |



| Specification | Hydraulic hole puncher |
|-----------------------|---|
| Item No. | SYD-25F |
| Output | 5T |
| Punching thickness | soft metal sheet below 1.5mm stainless steel below 1mm |
| Throat depth | 70mm |
| Punching range | 6-25mm |
| Standard punching die | 25mm |
| Weight | 3.9kgs |



| Specification | Hydraulic hole puncher |
|-----------------------|---|
| Item No. | SYD-32 |
| Output | 6T |
| Punching thickness | soft metal sheet below 2mm stainless steel below 1mm |
| Throat depth | 70mm |
| Punching range | 6-35mm |
| Standard punching die | 32mm |
| Weight | 4.8kgs |



| Specification | Hydraulic hole puncher |
|-----------------------|---|
| Item No. | SYD-32F |
| Output | 6T |
| Punching thickness | soft metal sheet below 2mm stainless steel below 1mm |
| Throat depth | 70mm |
| Punching range | 6-35mm |
| Standard punching die | 32mm |
| Weight | 4.3kgs |

Features&Functions:

1. The finished distributor, on-off case and plate can change the specification At any time. It can change the size of the tools simply.
2. We can make the hydraulic punch tool according to customer's requirement,Quick delivery.
3. When order rectangle and square mould of the punch tool, please measure the correct dimension.
4. Wide hole making range. It could be used on switchboard, power transmission Panel, meter plate, steel plate to big hole or punch hole. Operate conveniently, be punched holes smooth without burr.

Hydraulic Hole Puncher



| Specification | Hydraulic hole puncher |
|-----------------------|-----------------------------|
| Item No. | SYD-50 |
| Output | 16T |
| Punching thickness | Aluminu/Iron Plate: 3mm-5mm |
| Throat depth | 120mm |
| Punching range | 16-50mm |
| Standard punching die | 50mm |
| Weight | 16.8kgs |



| Specification | Hydraulic hole puncher |
|-----------------------|-----------------------------|
| Item No. | SYD-50X |
| Output | 10T |
| Punching thickness | Aluminu/Iron Plate: 2mm-4mm |
| Throat depth | 110mm |
| Punching range | 16-50mm |
| Standard punching die | 50mm |
| Weight | 10.5kgs |



| Specification | Hydraulic hole puncher |
|-----------------------|---|
| Item No. | SYD-32B |
| Output | 6T |
| Punching thickness | soft metal sheet below 2mm stainless steel below 1mm |
| Throat depth | 150mm |
| Punching range | 6-35mm |
| Standard punching die | 32mm |
| Weight | 8kgs |



| Specification | Hydraulic hole puncher |
|-----------------------|---|
| Item No. | SYD-32BF |
| Output | 6T |
| Punching thickness | soft metal sheet below 2mm stainless steel below 1mm |
| Throat depth | 150mm |
| Punching range | 6-35mm |
| Standard punching die | 32mm |
| Weight | 10kgs |



| Specification | Hydraulic hole puncher |
|-----------------------|---|
| Item No. | SYD-18F |
| Output | 5T |
| Punching thickness | soft metal sheet below 3mm stainless steel below 1.5mm |
| Throat depth | 40mm |
| Punching range | 6.5-18.5mm |
| Standard punching die | 18.5mm |
| Weight | 4.3kgs |

Features&Functions:

1. The finished distributor, on-off case and plate can change the specification At any time. It can change the size of the tools simply.
2. We can make the hydraulic punch tool according to customer's requirement,Quick delivery.
3. When order rectangle and square mould of the punch tool, please measure the correct dimension.
4. Wide hole making range. It could be used on switchboard, power transmission Panel, meter plate, steel plate to big hole or punch hole. Operate conveniently, be punched holes smooth without burr.

Electric Crimping Tool



| Specification | Electric crimper |
|----------------|--|
| Item No. | LZ-240C |
| Voltage | 220V/50HZ |
| Output | 60KN |
| Rated Power | 1100W |
| Load Power | 2200W |
| Crimping range | 16-240mm ² |
| Crimping die | 16/25/35/50/70/95/120/150/185/240mm ² |



| Specification | Electric crimper |
|----------------|--|
| Item No. | LZ-300C |
| Voltage | 220V/50HZ |
| Output | 60KN |
| Rated Power | 1100W |
| Load Power | 2200W |
| Crimping range | 16-300mm ² |
| Crimping die | 16/25/35/50/70/95/120/150/185/240/300mm ² |



| Specification | Electric crimper |
|----------------|---|
| Item No. | LZ-400C |
| Voltage | 220V/50HZ |
| Output | 120KN |
| Rated Power | 1100W |
| Load Power | 2200W |
| Crimping range | 50-400mm ² |
| Crimping die | 50/70/95/120/150/185/240/300/400mm ² |



| Specification | Battery Axial Press Tool |
|------------------|--------------------------|
| Item No. | LS-1632 |
| Press force | 60KN |
| Press range | Φ16-Φ32mm |
| Stroke | 17mm |
| Battery | DC18V/2.5Ah Li-ion |
| Standard Die | Φ16/Φ20/Φ25/Φ32 |
| Charging Voltage | AC100V-240V;50-60HZ |

Electric Punching Tools



| Specification | Electric puncher |
|-----------------------|---|
| Item No. | MHP-20(Angle Long Type) |
| Output | 10T |
| Voltage | 220V/110V |
| Motor power | 1200w |
| Throat depth | 40mm(1.57 inch) |
| Range | Iron Plate:3mm- 6mm Copper/Aluminum :3mm-8mm |
| Standard punching die | 6.5/9/13/17/20.5mm |
| Weight | 20kgs |



| Specification | Electric puncher |
|-----------------------|---|
| Item No. | MHP-20U(Channel Long type) |
| Output | 10T |
| Voltage | 220V/110V |
| Motor power | 1200w |
| Throat depth | 50mm |
| Range | Iron Plate:3mm- 6mm Copper/Aluminum :3mm-8mm |
| Standard punching die | 6.5/9/13/17/20.5mm |
| Weight | 24kgs |



| Specification | Electric puncher |
|-----------------------|---|
| Item No. | MHP-20(Angle Short Type) |
| Output | 10T |
| Voltage | 220V/110V |
| Motor power | 1200w |
| Throat depth | 40mm(1.57 inch) |
| Range | Iron Plate:3mm- 6mm Copper/Aluminum :3mm-8mm |
| Standard punching die | 6.5/9/13/17/20.5mm |
| Weight | 20kgs |



| Specification | Electric puncher |
|-----------------------|---|
| Item No. | MHP-20U(Channel)Short Type) |
| Output | 10T |
| Voltage | 220V/110V |
| Motor power | 1200w |
| Throat depth | 50mm |
| Range | Iron Plate:3mm- 6mm Copper/Aluminum :3mm-8mm |
| Standard punching die | 6.5/9/13/17/20.5mm |
| Weight | 24kgs |

Features&Functions:

- 1.Precise positioning, stable penetration, hydraulic punching, avoiding chipping Ultra-high power, extremely fast into holes.
 - 2.Can be carried to the site or fixed in the factory for batch punching
 - 3.The base can be placed on the platform to work, and the auxiliary handle can be mounted for hand-held work.
- This hole puncher is suitable for copper plate, aluminum plate, iron plate, angle iron and etc.
Punch Dies: 6.5mm,9mm,13mm,17mm,20.5mm(1/4",7/20",1/2",3/5",4/5")
Punch speed: 2-3s; Punch thickness: 3-6mm thickness Iron /steel plate and 3-8mm thickness copper / aluminum plate.
Portable, small and easy to operate also saving power and improving punch speedy.

Electric Rebar Cutting Tools



| Specification | Electric rebar cutter |
|---------------|-----------------------|
| Item No. | RC-16 |
| Cutting range | 4-16mm |
| Voltage | 110V/220V |
| Output | 1.05kw |
| Weight | 12.5kgs |



| Specification | Electric rebar cutter |
|---------------|-----------------------|
| Item No. | RC-20 |
| Cutting range | 4-20mm |
| Voltage | 110V/220V |
| Output | 1.05kw |
| Weight | 12.5kgs |



| Specification | Electric rebar cutter |
|---------------|-----------------------|
| Item No. | RC-22 |
| Cutting range | 4-22mm |
| Voltage | 110V/220V |
| Output | 1.05kw |
| Weight | 21.5kgs |



| Specification | Electric rebar cutter |
|---------------|-----------------------|
| Item No. | RC-25 |
| Cutting range | 4-25mm |
| Voltage | 110V/220V |
| Output | 1.05kw |
| Weight | 32kgs |



| Specification | Electric rebar cutter |
|---------------|-----------------------|
| Item No. | RC-32 |
| Cutting range | 6-32mm |
| Voltage | 110V/220V |
| Output | 1.8kw |
| Weight | 45kgs |



| Specification | Electric Angle Cutter |
|---------------|-----------------------|
| Item No. | JP-60 |
| Cutting range | 60mm*60mm Angle |
| Voltage | 220V/230V |
| Rated Power | 1300W |
| Weight | 21kgs |

Electric Rebar Bending Tools



| Specification | Electric rebar bender |
|---------------|-----------------------|
| Item No. | RB-16 |
| Bending range | 4-16mm |
| Voltage | 110V/220V |
| Rated Power | 800/900W |
| Bending Range | 0-130° |
| Weight | 16kgs |



| Specification | Electric rebar bender |
|---------------|-----------------------|
| Item No. | RB-22 |
| Bending range | 4-22mm |
| Voltage | 110V/220V |
| Rated Power | 950W |
| Bending Range | 0-130° |
| Weight | 22kgs |



| Specification | Electric rebar bender |
|---------------|-----------------------|
| Item No. | RB-32 |
| Bending range | 16-32mm |
| Voltage | 110V/220V |
| Rated Power | 1600W |
| Bending Range | 0-130° |
| Weight | 35kgs |



| Specification | Electric rebar bender |
|---------------|-----------------------|
| Item No. | RB-20 |
| Bending range | 4-20mm |
| Voltage | 110V/220V |
| Rated Power | 900/1050W |
| Bending Range | 0-130° |
| Weight | 24kgs |



| Specification | Electric rebar bender |
|---------------|-----------------------|
| Item No. | RB-25 |
| Bending range | 4-25mm |
| Voltage | 110V/220V |
| Rated Power | 1100W |
| Bending Range | 0-130° |
| Weight | 29kgs |



| Model no. | Bending Range(mm) | Bending Angle | Weight(kg) |
|-----------|-------------------|---------------|------------|
| RB-25 | 4-25mm | 0-90° | 15 |
| RB-40 | 4-40mm | 0-90° | 25 |

Battery Tools



| Specification | Battery crimper |
|------------------|--|
| Item No. | LS-300 |
| Crimping force | 60KN |
| Crimping range | Cu 300mm ² /AL 240mm ² |
| Stroke | 17mm |
| Time/Work | 2.5s-4s(Depend on the dia of cable) |
| Battery | DC18V/2.5Ah Li-ion |
| Charging Voltage | AC100V-240V;50-60HZ |
| Crimping die | 16/25/35/50/70/95/120/150/185/240/300mm ² |



| Specification | Battery Cable Cutter |
|------------------|-----------------------------------|
| Item No. | LS-30 |
| Crimping force | 60KN |
| Cutting range | CU/AL Cable 30mm |
| Stroke | 17mm |
| Time/Work | 2s-4s(Depend on the dia of cable) |
| Battery | DC18V/2.5Ah Li-ion |
| Charging Voltage | AC100V-240V;50-60HZ |



| Specification | Battery Press Tool |
|---------------------|---------------------|
| Item No. | LS-1525 |
| Press force | 60KN |
| Press range | DN15-DN25 |
| Stroke | 17mm |
| Crimping cycle time | 2-4S |
| Battery | DC18V/2.5Ah Li-ion |
| Standard Die | DN15/DN20/DN25 |
| Charging Voltage | AC100V-240V;50-60HZ |



| Specification | Battery Cable Cutter |
|------------------|-----------------------------------|
| Item No. | LS-30C |
| Crimping force | 60KN |
| Cutting range | CU/AL Cable 30mm |
| Stroke | 17mm |
| Time/Work | 2s-4s(Depend on the dia of cable) |
| Battery | DC18V/2.5Ah Li-ion |
| Charging Voltage | AC100V-240V;50-60HZ |

Features&Functions:

OLD Display

Battery CrimpingTools



| Specification | Battery Crimping Tool |
|------------------|---|
| Item No. | EZ-300 |
| Crimping force | 60KN |
| Crimping range | Cu 300mm ² /Al 240mm ² |
| Stroke | 17mm |
| Battery capacity | 320crimping cycle |
| Crimping time | 3s-6s(Depend on the size of cable) |
| Battery | 18V/4.0Ah Li-ion |
| Battery Charger | AC 100-240V |
| Crimping die | 10/16/25/35/50/70/95/120/150/185/240/300mm ² |



| Specification | Battery Crimping Tool |
|------------------|--|
| Item No. | EZ-400 |
| Crimping force | 120KN |
| Crimping range | Cu 400mm ² /Al 300mm ² |
| Stroke | 42mm |
| Battery capacity | 120crimping cycle |
| Crimping time | 6s-18s(Depend on the size of cable) |
| Battery | 18V/4.0Ah Li-ion |
| Battery Charger | AC 100-240V |
| Crimping die | 16/25/35/50/70/95/120/150/185/240/300/400mm ² |



| Specification | Battery plumbing press tool |
|------------------------|-----------------------------|
| Item No. | EZ-1550 |
| Crimping force | 60KN |
| Stroke | 40mm |
| Crimping Range | DN15-25 |
| Rated working pressure | 52Mpa |
| Battery capacity | 300crimping cycle |
| Battery | 18V/4.0Ah Li-ion |
| Crimping die | DN15/DN20/DN25 |



| Specification | Battery Crimping Tool |
|------------------|---|
| Item No. | EZ-630 |
| Crimping force | 200KN |
| Crimping range | 20-630mm ² |
| Stroke | 20mm |
| Battery capacity | 130crimping cycle |
| Battery | 18V/4.0Ah Li-ion |
| Crimping die | 25/35/50/70/95/120/150/185/240/300/400/500/630mm ² |

Two In One Battery Cutter /Crimper

| Specification | Two in one Battery Crimper/Cutter |
|------------------------|---|
| Item No. | EZ-300/40 |
| Crimping/Cutting force | 60KN |
| Crimping range | 10-300mm ² |
| Stroke | 17mm |
| Battery capacity | 120 Times cycle |
| Crimping time | 6s-18s(Depend on the size of cable) |
| Battery | 18V/4.0Ah Li-ion |
| Cutting max | φ40mm ACSR/ Cu/Al Amored Cable |
| Crimping die | 10/16/25/35/50/70/95/120/150/185/240/300mm ² |



| Specification | Two in one Battery Crimper/Cutter |
|------------------------|---|
| Item No. | EZ-300/65C |
| Crimping/Cutting force | 60KN |
| Crimping range | 10-300mm ² |
| Stroke | 17mm |
| Battery capacity | 120 Times cycle |
| Crimping time | 6s-18s(Depend on the size of cable) |
| Battery | 18V/4.0Ah Li-ion |
| Cutting max | φ65mm Cu/Al Amored Cable |
| Crimping die | 10/16/25/35/50/70/95/120/150/185/240/300mm ² |

| Specification | Two in one Battery Crimper/Cutter |
|------------------------|--|
| Item No. | EZ-400/55 |
| Crimping/Cutting force | 120KN |
| Crimping range | 16-400mm ² |
| Stroke | 42mm |
| Battery capacity | 120 Times cycle |
| Crimping time | 6s-18s(Depend on the size of cable) |
| Battery | 18V/4.0Ah Li-ion |
| Cutting max | φ55mm Cu/Al Amored Cable |
| Crimping die | 16/25/35/50/70/95/120/150/185/240/300/400mm ² |



| Specification | Two in one Battery Crimper/Cutter |
|------------------------|--|
| Item No. | EZ-400/85C |
| Crimping/Cutting force | 120KN |
| Crimping range | 16-400mm ² |
| Stroke | 42mm |
| Battery capacity | 120 Times cycle |
| Crimping time | 6s-18s(Depend on the size of cable) |
| Battery | 18V/4.0Ah Li-ion |
| Cutting max | φ85mm Cu/Al Amored Cable |
| Crimping die | 16/25/35/50/70/95/120/150/185/240/300/400mm ² |

Battery Cable Cutter



| Specification | Battery cable cutter |
|---------------|-------------------------------------|
| Item No. | EZ-30C |
| Cutting force | 60KN |
| Stroke | 30mm |
| Capacity | CU/AL Amoured Cable:φ30mm |
| Cutting time | 8s-10s(Depend on the size of cable) |
| Battery | 18V/4.0Ah Li-ion |



| Specification | Battery cable cutter |
|---------------|--------------------------------------|
| Item No. | EZ-40 |
| Cutting force | 60KN |
| Stroke | 40mm |
| Capacity | ACSR /CU/AL Amoured Cable:φ40mm |
| Cutting time | 10s-15s(Depend on the size of cable) |
| Battery | 18V/4.0Ah Li-ion |



| Specification | Battery cable cutter |
|---------------|--------------------------------------|
| Item No. | EZ-50 |
| Cutting force | 60KN |
| Stroke | 50mm |
| Capacity | CU/AL Amoured Cable:φ50mm |
| Cutting time | 10s-15s(Depend on the size of cable) |
| Battery | 18V/4.0Ah Li-ion |



| Specification | Battery cable cutter |
|---------------|--------------------------------------|
| Item No. | EZ-55 |
| Cutting force | 60KN |
| Stroke | 58mm |
| Capacity | CU/AL Amoured Cable:55mm |
| Cutting time | 12s-18s(Depend on the size of cable) |
| Battery | 18V/4.0Ah Li-ion |



| Specification | Battery cable cutter |
|------------------------|--------------------------------------|
| Item No. | EZ-85 |
| Cutting force | 60KN |
| Rated working pressure | 63Mpa |
| Cutting time | 12s-15s(Depend on the size of cable) |
| Capacity | CU/AL Amoured Cable:φ85mm |
| Battery | 18V/4.0Ah Li-ion |



| Specification | Battery cable cutter |
|------------------------|--------------------------------------|
| Item No. | EZ-105 |
| Cutting force | 120KN |
| Rated working pressure | 63Mpa |
| Cutting time | 15s-20s(Depend on the size of cable) |
| Capacity | CU/AL Amoured Cable:φ105mm |
| Battery | 18V/4.0Ah Li-ion |

Battery Cable Cutter

| Specification | Battery cable cutter |
|------------------------|--------------------------------------|
| Item No. | EZ-65C |
| Cutting force | 60KN |
| Rated working pressure | 63Mpa |
| Cutting time | 12s-15s(Depend on the size of cable) |
| Capacity | CU/AL Amoured Cable:φ65mm |
| Battery | 18V/4.0Ah Li-ion |



| Specification | Battery cable cutter |
|------------------------|--------------------------------------|
| Item No. | EZ-85C |
| Cutting force | 60KN |
| Rated working pressure | 63Mpa |
| Cutting time | 12s-18s(Depend on the size of cable) |
| Capacity | CU/AL Amoured Cable:φ85mm |
| Battery | 18V/4.0Ah Li-ion |

| Specification | Battery cable cutter |
|------------------------|--------------------------------------|
| Item No. | EZ-105C |
| Cutting force | 120KN |
| Rated working pressure | 63Mpa |
| Cutting time | 15s-20s(Depend on the size of cable) |
| Capacity | CU/AL Amoured Cable:φ105mm |
| Battery | 18V/4.0Ah Li-ion |



| Specification | Battery cable cutter |
|------------------------|--------------------------------------|
| Item No. | EZ-120C |
| Cutting force | 200KN |
| Rated working pressure | 63Mpa |
| Cutting time | 15s-25s(Depend on the size of cable) |
| Capacity | CU/AL Amoured Cable:φ120mm |
| Battery | 18V/4.0Ah Li-ion |

| Specification | Battery cable cutter |
|------------------------|--------------------------------------|
| Item No. | EZ-135C |
| Cutting force | 200KN |
| Rated working pressure | 63Mpa |
| Cutting time | 15s-25s(Depend on the size of cable) |
| Capacity | CU/AL Amoured Cable:φ135mm |
| Battery | 18V/4.0Ah Li-ion |



| Specification | Battery Cable Cutter |
|---------------|--|
| Item No. | EC-50M |
| Cutting range | Max φ50mm For Cu/Al cable |
| | Max 800Sqmm for ACSR |
| | Max 100Sqmm for prestressed Steel wire |
| Accessory | Battery X2PCS Charger X1 PC |
| Length | Approx 370mm |
| Battery | 18V/4.0Ah Li-ion |
| G.W/N.W | 6.5kGS/3.2KGS |

Hydraulic Cylinder



| Model no. | Tons(T) | Effective Area(cm ²) | Oil Capacity(c m ³) | Inner Dia(mm) | Outer Dia(mm) | Travel(mm) | Weight(kg) | Collapsed Height | Piston Dia(mm) | Pump |
|-----------|---------|----------------------------------|---------------------------------|---------------|---------------|------------|------------|------------------|----------------|---------|
| FPY-51 | 5 | 9.6 | 7 | φ35mm | φ57mm | 7mm | 0.7 | 40mm | φ28mm | CP-180 |
| FPY-101 | 10 | 15.89 | 17 | φ45mm | φ83mm | 11mm | 1.6 | 47mm | φ35mm | CP-180 |
| FPY-201 | 20 | 33.1 | 40 | φ65mm | φ98mm | 12mm | 2.75 | 55mm | φ50mm | CP-180 |
| FPY-301 | 30 | 44.1 | 62 | φ75mm | φ123mm | 14mm | 5 | 61mm | φ65mm | CP-700 |
| FPY-501 | 50 | 70.8 | 127 | φ95mm | φ148mm | 18mm | 8.5 | 71mm | φ80mm | CP-700 |
| FPY-1001 | 100 | 143 | 286 | φ135mm | φ188mm | 20mm | 19 | 90mm | φ100mm | CP-700A |
| FPY-1501 | 150 | 213.7 | 470 | φ165mm | φ228mm | 22mm | 23 | 100mm | φ115mm | CP-700A |
| FPY-2001 | 200 | 268.6 | 698 | φ185mm | φ268mm | 26mm | 42 | 105mm | φ120mm | CP-700A |



Features&Functions:

1. Grooved plunger top saves load from I sliding.
 2. Mounting holes permit easy fixuring. Single acting spring return type.
 3. Chrome plating on the plunger avoids eroding and results in less friction.
 4. High strength alloy steel for durability.
 5. Baked enamel finish for increased corrosion resistance.
 6. High flow ZG 3/8" male coupler & dust cap included in all cylinders. Compact, Flat design for use in confined areas where other cylinders will not fit.
- Customized cylinders can be made against order.

Multistage Hydraulic Cylinder



| Model no. | Tons(T) | Effective Area(cm ²) | Oil Capacity(cm ³) | Inner Dia(mm) | Outer Dia(mm) | Travel(mm) | Weight(kg) | Collapsed Height |
|-----------|---------|----------------------------------|--------------------------------|---------------|---------------|------------|------------|------------------|
| FPY-10D | 10 | 22.9 | 30 | φ45mm | φ83mm | 25mm | 1.6 | 47mm |
| FPY-20D | 20 | 37.9 | 51 | φ60mm | φ98mm | 26mm | 2.8 | 55mm |
| FPY-30D | 30 | 70.9 | 123 | φ75mm | φ123mm | 53mm | 5.5 | 61mm |
| FPY-50D | 50 | 97.5 | 188 | φ95mm | φ148mm | 64mm | 9 | 71mm |
| FPY-100D | 100 | 203.2 | 418 | φ135mm | φ188mm | 75mm | 20.5 | 90mm |

Features&Functions:

- 1.Single acting, spring return type.
 - 2.Telescopic stroke, less height – more stroke.
 - 3.Chrome plating on the plunger avoids eroding and results in less friction.
 - 4.Baked enamel finish for increased corrosion resistance.
 - 5.High flow ZG 3/8” male coupler & dust cap included in all cylinders.
 - 6.High strength alloy steel for durability.
 - 7.Compact, Flat design for use in confined areas where other Cylinders will not fit.
- Customized cylinders can be made against order.

Hydraulic Cylinder

| Model no. | Tons(T) | Effective Area(cm ²) | Oil Capacity (cm ³) | Inner Dia(mm) | Outer Dia(mm) | Travel(m) | Piston Dia(mm) | Weight(kg) | Collapsed Height | Pump |
|------------|---------|----------------------------------|---------------------------------|---------------|---------------|-----------|----------------|------------|------------------|---------|
| RSC-1050 | 10 | 15.9 | 79 | φ45mm | φ64mm | 50mm | φ38mm | 2.3 | 103mm | CP-180 |
| RSC-10100 | 10 | 15.9 | 159 | φ45mm | φ64mm | 100mm | φ38mm | 3.1 | 150mm | CP-700 |
| RSC-10150 | 10 | 15.9 | 238 | φ45mm | φ64mm | 150mm | φ38mm | 4.6 | 200mm | CP-700 |
| RSC-2050 | 20 | 28.3 | 141 | φ60mm | φ84mm | 50mm | φ50mm | 4 | 105mm | CP-700 |
| RSC-20100 | 20 | 28.3 | 283 | φ60mm | φ84mm | 100mm | φ50mm | 5.7 | 155mm | CP-700B |
| RSC-20150 | 20 | 28.3 | 424 | φ60mm | φ84mm | 150mm | φ50mm | 7.4 | 205mm | CP-700B |
| RSC-3050 | 30 | 44.2 | 221 | φ75mm | φ103mm | 50mm | φ65mm | 6.5 | 110mm | CP-700 |
| RSC-30100 | 30 | 44.2 | 442 | φ75mm | φ103mm | 100mm | φ65mm | 9 | 160mm | CP-700B |
| RSC-30150 | 30 | 44.2 | 663 | φ75mm | φ103mm | 150mm | φ65mm | 11.6 | 210mm | CP-700A |
| RSC-5050 | 50 | 70.8 | 354 | φ95mm | φ118mm | 50mm | φ65mm | 8.4 | 113mm | CP-700B |
| RSC-50100 | 50 | 70.8 | 708 | φ95mm | φ118mm | 100mm | φ80mm | 11.5 | 165mm | CP-700A |
| RSC-50150 | 50 | 70.8 | 1062 | φ95mm | φ118mm | 150mm | φ80mm | 14.6 | 215mm | CP-700A |
| RSC10050 | 100 | 143 | 715 | φ135mm | φ178mm | 50mm | φ100mm | 22 | 132mm | CP-700B |
| RSC-100100 | 100 | 143 | 1430 | φ135mm | φ178mm | 100mm | φ100mm | 29 | 182mm | CP-700A |
| RSC-100150 | 100 | 143 | 2145 | φ135mm | φ178mm | 150mm | φ100mm | 35.3 | 232mm | CP-700A |
| RSC-15050 | 150 | 213.7 | 1068 | φ165mm | φ208mm | 50mm | φ115mm | 43 | 132mm | CP-700A |
| RSC-150100 | 150 | 213.7 | 2137 | φ165mm | φ208mm | 100mm | φ115mm | 53 | 182mm | CP-700A |
| RSC-150150 | 150 | 213.7 | 3205 | φ165mm | φ208mm | 150mm | φ115mm | 63 | 232mm | CP-700A |
| RSC-20050 | 200 | 268.6 | 1343 | φ185mm | φ242mm | 50mm | φ120mm | 57 | 158mm | CP-700A |
| RSC-200100 | 200 | 268.6 | 2686 | φ185mm | φ242mm | 100mm | φ120mm | 70 | 208mm | DYB-63A |
| RSC-200150 | 200 | 268.6 | 4029 | φ185mm | φ242mm | 150mm | φ120mm | 83 | 258mm | DYB-63A |



Heavy Duty Construction: Made of heavy-duty metal construction, our hydraulic cylinder jack is durable and designed for long-lasting use.

Paint spraying at the surface, avoid scratching and corrosion.

Wide Application: This hydraulic jack cylinder has the advantages of small size, suitable for narrow space position.

A great helper for riggers, fabricators, welders, and automotive body and frame shops in electric power, steel, Bridges, machinery, and other industries.



Hydraulic Cylinder

| Model no. | Tons(T) | Effective Area(cm ²) | Oil Capacity(cm ³) | Inner Dia(mm) | Outer Dia(mm) | Travel(mm) | Weight(kg) | Collapsed Height | Pump |
|-----------|---------|----------------------------------|--------------------------------|---------------|---------------|------------|------------|------------------|-----------|
| RR-10200 | 10 | 15.9 | 318 | φ45mm | φ65mm | 200mm | 5.5 | 290mm | CP-800S |
| RR-10250 | 10 | 15.9 | 397 | φ45mm | φ65mm | 250mm | 6.5 | 440mm | CP-800S |
| RR-10300 | 10 | 15.9 | 477 | φ45mm | φ65mm | 300mm | 7.5 | 390mm | CP-800S |
| RR-10400 | 10 | 15.9 | 636 | φ45mm | φ65mm | 400mm | 8.5 | 490mm | CP-800S |
| RR-10500 | 10 | 15.9 | 795 | φ45mm | φ65mm | 500mm | 8.5 | 590mm | CP-800S |
| RR-20200 | 20 | 28.3 | 566 | φ60mm | φ80mm | 200mm | 9.6 | 300mm | CP-800S |
| RR-20300 | 20 | 28.3 | 849 | φ60mm | φ80mm | 300mm | 11 | 400mm | CP-800S |
| RR-20400 | 20 | 28.3 | 1132 | φ60mm | φ80mm | 400mm | 12 | 500mm | CP-800S |
| RR-20500 | 20 | 28.3 | 1415 | φ60mm | φ80mm | 500mm | 13 | 600mm | CP-800S |
| RR-30200 | 30 | 38.5 | 770 | φ70mm | φ110mm | 200mm | 21 | 305mm | CP-800S |
| RR-30300 | 30 | 38.5 | 1155 | φ70mm | φ110mm | 300mm | 29 | 405mm | CP-800S |
| RR-30400 | 30 | 38.5 | 1540 | φ70mm | φ110mm | 400mm | 30 | 505mm | CP-800S |
| RR-50200 | 50 | 63.6 | 1272 | φ90mm | φ130mm | 200mm | 28 | 315mm | HHB-700AB |
| RR-50300 | 50 | 63.6 | 1980 | φ90mm | φ130mm | 300mm | 32 | 415mm | HHB-700AB |
| RR-50400 | 50 | 63.6 | 2544 | φ90mm | φ130mm | 400mm | 47 | 515mm | HHB-700AB |
| RR-50500 | 50 | 63.6 | 3180 | φ90mm | φ130mm | 500mm | 60 | 615mm | HHB-700AB |
| RR-100200 | 100 | 132.6 | 2652 | φ130mm | φ168mm | 200mm | 37 | 350mm | HHB-700AB |
| RR-100300 | 100 | 132.6 | 3978 | φ130mm | φ168mm | 300mm | 66 | 450mm | HHB-700AB |
| RR-100400 | 100 | 132.6 | 5304 | φ130mm | φ168mm | 400mm | 83 | 550mm | HHB-700AB |
| RR-100500 | 100 | 132.6 | 6630 | φ130mm | φ168mm | 500mm | 93 | 650mm | HHB-700AB |
| RR-150150 | 150 | 213.7 | 3205 | φ165mm | φ218mm | 150mm | 68 | 300mm | HHB-700AB |
| RR-150200 | 150 | 213.7 | 4274 | φ165mm | φ218mm | 200mm | 86 | 350mm | DB300-S2 |
| RR-150300 | 150 | 213.7 | 6411 | φ165mm | φ218mm | 300mm | 88 | 450mm | DB300-S2 |
| RR-200200 | 200 | 213.7 | 4274 | φ185mm | φ240mm | 200mm | 88 | 360mm | DB300-S2 |
| RR-200300 | 200 | 213.7 | 6411 | φ185mm | φ240mm | 300mm | 98 | 460mm | DB300-S2 |
| RR-30050 | 300 | 415.3 | 2076 | φ230mm | φ299mm | 50mm | 130 | 250mm | DB300-S2 |
| RR-300100 | 300 | 415.3 | 4153 | φ230mm | φ299mm | 100mm | 152 | 300mm | DB300-S2 |
| RR300200 | 300 | 415.3 | 8306 | φ230mm | φ299mm | 200mm | 167 | 400mm | DB300-S2 |

Hollow plunger hydraulic cylinder



| Model no. | Tons(T) | Effective Area(cm ²) | Oil Capacity (cm ³) | Travel(m m) | Inner Dia(mm) | Outer Dia(mm) | Collapsed Height(mm) | Centre Bore(mm) | Weight(kg) | Pump |
|-----------|---------|----------------------------------|---------------------------------|-------------|---------------|---------------|----------------------|-----------------|------------|---------|
| RCH-2050 | 20 | 29.3 | 146 | 50mm | φ75mm | φ98mm | 152mm | 28mm | 8 | CP-700 |
| RCH-20100 | 20 | 29.3 | 292 | 100mm | φ75mm | φ98mm | 202mm | 28mm | 11 | CP-700 |
| RCH-3050 | 30 | 47.7 | 239 | 50mm | φ90mm | φ113mm | 172mm | 34mm | 12.3 | CP-700 |
| RCH-30100 | 30 | 47.7 | 477 | 100mm | φ90mm | φ113mm | 222mm | 34mm | 15.6 | CP-700A |
| RCH-6050 | 60 | 80.3 | 402 | 50mm | φ125mm | φ158mm | 190mm | 54mm | 29.4 | CP-700A |
| RCH-60100 | 60 | 80.3 | 803 | 100mm | φ125mm | φ158mm | 265mm | 54mm | 37.3 | CP-700A |
| RCH-10075 | 100 | 135.2 | 1015 | 75mm | φ165mm | φ208mm | 260mm | 80mm | 60.3 | CP-700A |

Features&Functions:

1. Hollow plunger design allows for both Pull & push forces.
2. Single acting spring return.
3. Baked enamel finish for increased corrosion resistance.
4. High flow ZG 3/8" male coupler & dust cap included in all cylinders.
5. High strength alloy steel for durability.

Customized cylinders can be made against order.

Telescopic Cylinder (Single Acting)



| Model no. | Tons (T) | | Oil Capacity(L) | Effective Area(cm ²) | Inner Dia(mm) | Outer Dia(mm) | Travel(mm) | Weight(kg) | Collapsed Height |
|-----------|----------|---|-----------------|----------------------------------|---------------|---------------|------------|------------|------------------|
| DFPY-20 | 20 | 1Stage 20T 2Stage 10T | 15.9 | 159 | 60 | 84 | 100 | 4.8 | 105 |
| DFPY-30 | 30 | 1Stage 30T 2Stage 15T | 44.1 | 441 | 75 | 103 | 100 | 7 | 110 |
| DFPY-50 | 50 | 1Stage 50T 2Stage 20T 3Stage 13T | 70.8 | 1062 | 95 | 118 | 150 | 9.5 | 112 |
| DFPY-100 | 100 | 1Stage 100T 2Stage 50T 3Stage 20T | 143 | 2145 | 135 | 178 | 150 | 22 | 132 |
| DFPY-20L | 20 | 1Stage 20T 2Stage 10T | 15.9 | 318 | 45 | 64 | 200 | 7 | 155 |
| DFPY-30L | 30 | 1Stage 30T 2Stage 15T | 44.1 | 882 | 75 | 103 | 200 | 9.8 | 160 |
| DFPY-50L | 50 | 1Stage 50T 2Stage 20T 3Stage 13T | 70.8 | 2124 | 95 | 118 | 300 | 9.5 | 165 |
| DFPY-100L | 100 | 1Stage 100T 2Stage 50T 3Stage 20T | 143 | 4290 | 135 | 178 | 300 | 22 | 182 |

Features&Functions:

1. Telescoping jacks offer all of the quality features and capabilities of the standard jack with a bonus.
2. The super long stroke of these jacks saves time and effort by eliminating the need to lift, crib etc. In most application the user can place the jack once and complete the lift.
3. Optimal ratio of retracted height to maximum stroke.
4. Single acting, load return type.
5. High flow ZG 3/8" male coupler and dust cap included in all cylinders.
6. Chrome plating on the plunger avoids eroding and results in less friction.

Customized cylinders can be made against order.

Lock Nut Cylinder (Single Acting)



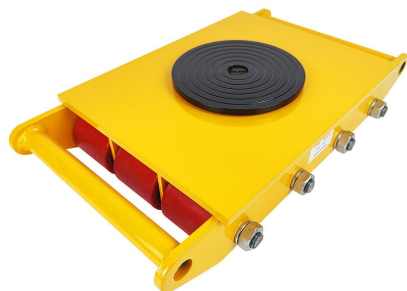
| Model no. | Tons(T) | Effective Area(cm ²) | Oil Capacity (cm ³) | Inner Dia(mm) | Outer Dia(mm) | Travel(mm) | Collapsed Height(mm) | Locknut Height(mm) | Pump |
|------------|---------|----------------------------------|---------------------------------|---------------|---------------|------------|----------------------|--------------------|---------|
| CLL-1050 | 10 | 15.9 | 79 | 45 | 64 | 50 | 130 | 25 | CP-700 |
| CLL-10100 | 10 | 15.9 | 159 | 45 | 64 | 100 | 180 | 25 | CP-700 |
| CLL-10150 | 10 | 15.9 | 238 | 45 | 64 | 150 | 230 | 25 | CP-700 |
| CLL-2050 | 20 | 28.2 | 141 | 60 | 83 | 50 | 137 | 30 | CP-700 |
| CLL-20100 | 20 | 28.2 | 282 | 60 | 83 | 100 | 187 | 30 | CP-700 |
| CLL-20150 | 20 | 28.2 | 423 | 60 | 83 | 150 | 237 | 30 | CP-700 |
| CLL-3050 | 30 | 44.1 | 220 | 75 | 103 | 50 | 141 | 30 | CP-700A |
| CLL-30100 | 30 | 44.1 | 441 | 75 | 103 | 100 | 191 | 30 | CP-700A |
| CLL-30150 | 30 | 44.1 | 661 | 75 | 103 | 150 | 241 | 30 | CP-700A |
| CLL-5050 | 50 | 70.8 | 354 | 95 | 118 | 50 | 147 | 36 | DYB-63A |
| CLL-50100 | 50 | 70.8 | 708 | 95 | 118 | 100 | 197 | 36 | DYB-63A |
| CLL-50150 | 50 | 70.8 | 1062 | 95 | 118 | 150 | 247 | 36 | DYB-63A |
| CLL-10050 | 100 | 143 | 715 | 135 | 178 | 50 | 168 | 40 | DYB-63A |
| CLL-100100 | 100 | 143 | 1430 | 135 | 178 | 100 | 218 | 40 | DYB-63A |
| CLL-100150 | 100 | 143 | 2145 | 135 | 178 | 150 | 268 | 40 | DYB-63A |



Features&Functions:

- 1.Safety lock nut for Mechanical load holding.
- 2.Single acting, spring return type. Stop ring protects the cylinder when the stroke reaches to maximum, absorbing heaviness from the other side.
- 3.Chrome plating on the plunger avoids corrosion and results in less friction.
- 4.High flow 3/8"NPT female coupler & dust cap included in all cylinders.
- 5.High strength alloy steel for durability.

CARGO TROLLEY/ TOE JACKS



| Model no. | Tons(T) | Length(mm) | Width(mm) | Height(mm) | Weight(kg) |
|-----------|---------|------------|-----------|------------|------------|
| CRA-4 | 6 | 300 | 222 | 110 | 13.5 |
| CRA-6 | 8 | 400 | 222 | 110 | 20.5 |
| CRA-8 | 12 | 500 | 222 | 110 | 28.5 |
| CRA-9 | 15 | 400 | 308 | 110 | 29.5 |
| CRA-12 | 18 | 500 | 312 | 110 | 40.5 |



| Model no. | jaw(T) | Top(T) | Stroke(mm) | Lifting Stroke | Weight |
|-----------|--------|--------|------------|----------------|--------|
| MHC-5 | 2.5 | 5 | 24 | 115 | 11 |
| MHC-10 | 5 | 10 | 25 | 148 | 24 |
| MHC-20 | 10 | 20 | 29 | 158 | 36 |
| MHC-30 | 15 | 30 | 35 | 158 | 55 |
| MHC-50 | 25 | 50 | 40 | 150 | 75 |

1. Four different models from 5 Ton to 50 Ton
2. Low height lifting toe
3. Big and flat base provides extra stability.

On certain occasions when a heavy machine or load needs to be moved, there is very little ground clearance for machine moving skates to be placed under the machine.

In such cases, you would need to lift a corner or side of the machine to lift it sufficiently to accommodate an air skate. The perfect solution would be to use hydraulic toe jacks.

Hydraulic toe jacks are designed to lift heavy machinery and other similar type loads when there is a fair amount of ground clearance. With toe-like feet, they slide under the edge of the machine to ensure stability. The lift plate is then positioned at the underside of the machine,

which is then lifted clear to allow machinery moving skates to engage the load. Operated with a pump handle, lifting a heavy machine is a breeze.

Hydraulic Pipe Bender



| Model no. | Bending Angle | Bending Range(mm) | Bending Wall Thickness of Pipe(mm) | Mold(mm) | Weight | Size(cm) |
|-----------|---------------|-------------------|------------------------------------|----------------------|--------|----------------|
| SWG-25 | 0-180° | φ10-φ25mm | 0.8-2mm | 10/12/14/16/19/22/25 | 27 | 64.5x21.5x16cm |



| Model no. | Output | Bending Width(mm) | Bending Thickness (mm) | Mould(mm) | Weight |
|-----------|--------|-----------------------|------------------------|--------------------|--------|
| PLW-125 | 35T | 40/50/60/80/100/125mm | 4/6/8/10/12mm | 4/5/6/8/10/10/12mm | 90 |

Features&Functions:

- 1. It is designed for common water pipe, conductor pipe, gas pipe, thick steel pipe and so on...The bending angle could be 90 degree.
- 2. For 1/2"-2"one operation to be 90 degree. For 2-1/2"-4", pipe must be moved and bend for five time to the demanded radian.
- 3. It is made of strong nodular cast iron bending pipe mould material.
- 4. Bended surface smooth without folding marking. It's easy to operate.

Hydraulic Pipe Bender



| Model no. | Max output | Max Stroke(mm) | Bending Range(mm) | Thickness of pipe(mm) | Mould(mm) | Weight | Size(cm) |
|-----------|------------|----------------|-------------------|-----------------------|---------------------------------|--------|-----------|
| SWG-1 | 10 | 180 | 13-34 | 2-3.5 | 13/16/19/22/28/34 | 21 | 49x24x14 |
| SWG-2 | 16 | 250 | 22-60 | 2.75-4.5 | 22/28/34/42/48/60 | 48 | 72x31x20 |
| SWG-3 | 18 | 320 | 22-88.5 | 2.75-5 | 22/28/34/42/48/60/76/89 | 97 | 93x38x21 |
| SWG-4 | 25 | 380 | 22-108 | 2.75-6 | 22/28/34/42/48/60/76/89/108 | 136 | 119x40x24 |
| SWG-5 | 25 | 380 | 22-114 | 2.75-6 | 22/28/34/42/48/60/76/89/108/114 | 168 | 119x40x24 |



| Model no. | Max output | Max Stroke(mm) | Bending Range(mm) | Thickness of pipe(mm) | Mould(mm) | Weight | Size(cm) |
|-----------|------------|----------------|-------------------|-----------------------|---------------------------------|--------|-----------|
| DWG-1 | 10 | 180 | 13-34 | 2-3.5 | 13/16/19/22/28/34 | 17 | 47x24x14 |
| DWG-2 | 16 | 250 | 22-60 | 2.75-4.5 | 22/28/34/42/48/60 | 40 | 72x32x16 |
| DWG-3 | 18 | 320 | 22-88.5 | 2.75-5 | 22/28/34/42/48/60/76/89 | 84 | 93x38x21 |
| DWG-4 | 25 | 380 | 22-108 | 2.75-6 | 22/28/34/42/48/60/76/89/108 | 123 | 119x40x24 |
| DWG-5 | 25 | 380 | 22-114 | 2.75-6 | 22/28/34/42/48/60/76/89/108/114 | 149 | 119x40x24 |

Features&Functions:

1. It is designed for common water pipe, conductor pipe, gas pipe, thick steel pipe and so on...The bending angle could be 90 degree.
2. For 1/2"-2"one operation to be 90 degree. For 2-1/2"-4", pipe must be moved and bend for five time to the demanded radian.
3. It is made of strong nodular cast iron bending pipe mould material.
4. Bended surface smooth without folding marking. It's easy to operate.

Hydraulic Pipe Bender With Tripod Stand



| Model no. | Max output | Max Stroke(mm) | Bending Range(mm) | Thickness of pipe(mm) | Mould(mm) | Weight | Size(cm) |
|-----------|------------|----------------|-------------------|-----------------------|---------------------------------|--------|-----------|
| SWG-1J | 10 | 180 | 13-34 | 2-3.5 | 13/16/19/22/28/34 | 23 | 49x24x14 |
| SWG-2J | 16 | 250 | 22-60 | 2.75-4.5 | 22/28/34/42/48/60 | 51 | 72x31x20 |
| SWG-3J | 18 | 320 | 22-88.5 | 2.75-5 | 22/28/34/42/48/60/76/89 | 100 | 93x38x21 |
| SWG-4J | 25 | 380 | 22-108 | 2.75-6 | 22/28/34/42/48/60/76/89/108 | 202 | 119x40x24 |
| SWG-5J | 25 | 380 | 22-114 | 2.75-6 | 22/28/34/42/48/60/76/89/108/114 | 207 | 119x40x24 |



| Model no. | Max output | Max Stroke(mm) | Bending Range(mm) | Thickness of pipe(mm) | Mould(mm) | Weight | Size(cm) |
|-----------|------------|----------------|-------------------|-----------------------|---------------------------------|--------|-----------|
| DWG-1J | 10 | 180 | 13-34 | 2-3.5 | 13/16/19/22/28/34 | 19 | 49x24x14 |
| DWG-2J | 16 | 250 | 22-60 | 2.75-4.5 | 22/28/34/42/48/60 | 42 | 72x31x20 |
| DWG-3J | 18 | 320 | 22-88.5 | 2.75-5 | 22/28/34/42/48/60/76/89 | 86 | 93x38x21 |
| DWG-4J | 25 | 380 | 22-108 | 2.75-6 | 22/28/34/42/48/60/76/89/108 | 125 | 119x40x24 |
| DWG-5J | 25 | 380 | 22-114 | 2.75-6 | 22/28/34/42/48/60/76/89/108/114 | 151 | 119x40x24 |

Features&Functions:

1. It is designed for common water pipe, conductor pipe, gas pipe, thick steel pipe and so on...The bending angle could be 90 degree.
2. For 1/2"-2"one operation to be 90 degree. For 2-1/2"-4", pipe must be moved and bend for five time to the demanded radian.
3. It is made of strong nodular cast iron bending pipe mould material.
4. Bended surface smooth without folding marking. It's easy to operate.

Multi-Function Pipe Bender



| Model no. | Motor | Power | Thickness of pipe(mm) | Round Mould(mm) | Square Mould(mm) | Weight | Size(cm) |
|-----------|-------|-------------------|-----------------------|----------------------------|-------------------------|--------|-----------|
| CYW-76B | 1.5KW | 50-60hz/110V-380v | 0.5-2mm | 16/19/22/25/32/38/51/63/76 | 16/19/22/25/30/38/40/50 | 260 | 73x63x103 |



| Model no. | Motor | Power | Thickness of pipe(mm) | Round Mould(mm) | Square Mould(mm) | Weight | Size(cm) |
|-----------|-------|-------------------|-----------------------|----------------------------|-------------------------|--------|-----------|
| CYW-G76 | 1.5KW | 50-60hz/110V-380v | 0.5-2mm | 16/19/22/25/32/38/51/63/76 | 16/19/22/25/30/38/40/50 | 250 | 73x63x103 |

Features&Functions:

1. Bend large diameter into full circle or arc easily .These two model are very suitable for steel pipe of greenhouse bending. It can bend SS thick pipe ,thick square pipe and soft steel pipe .Adjust shafts by hand for two main shafts and one driven shaft .
2. If you want to bend pipes into a circular or arc shape ,the diameter of the circle or arc should be more than twenty times of the pipe diameter . We can supply bending dies in other specifications according to your requirements.
3. Dies are cast with special steel ,very long usage life.We will put machine and dies into one plywood case . Square dies and round dies are available.

Hydraulic Pipe Pressing Tool



| Specification | Hydraulic pipe Pressing tool |
|---------------|------------------------------|
| Item No. | JT-1632 |
| Cutting force | 6T |
| Stroke | 45mm |
| Accessories | 16/20/26/32mm |
| Weight | 6.5kgs |



| Specification | Hydraulic pipe crimping tool |
|---------------|------------------------------|
| Item No. | CW-20 |
| Cutting force | 3T |
| Stroke | 20mm |
| Crimping type | TH.SV.U |
| Weight | 1.7kgs |



| Specification | Hydraulic Axial Press Tool |
|---------------|---|
| Item No. | PEX-1632E |
| Max pressure | 500bar |
| Stroke | 12.5mm |
| Oil capacity | 220CC |
| Output of oil | Low pressure:9CC High pressure:1.2CC |



| Specification | Hydraulic pipe Pressing tool |
|---------------|------------------------------|
| Item No. | CWC-1632 |
| Cutting force | 12T |
| Stroke | 22mm |
| Accessories | 16/20/26/32mm |
| Weight | 7kgs |



| Specification | Hydraulic pipe crimping tool |
|---------------|------------------------------|
| Item No. | CW-26 |
| Cutting force | 3T |
| Stroke | 26mm |
| Crimping type | TH.SV.U |
| Weight | 1.7kgs |



| Specification | Manual Hydraulic Axial Press Tool |
|---------------|-----------------------------------|
| Item No. | PEX-1632E |
| Spread range | φ16/20/25/32mm |
| Length | 395mm |
| Accessories | φ16/20/25/32mm |
| Weight | 3.13kgs |

Features&Functions:

1. Mechanical crimping tool for connecting fitting with pipe.
2. The handle can be elongated with energy-efficient drive.
3. Well balanced barycenter, little angled wire pressing head meet with human-machinery engineering theory, operation more easy.
4. All stressing parts made of special steel treatment with quenching.
5. Head flip top style design closed crimping with 360 degree rotateable.

Wire Stripper



| Specification | Wire stripper |
|-------------------|------------------------------------|
| Item No. | BXQ-40B |
| Rated load | 10KN |
| Cutting Range | φ12-40mm |
| Cutting thickness | Below6mm,middle stripping below4mm |
| Weight | 1.04kgs |



| Specification | Wire stripper |
|---------------|--|
| Item No. | BX-30 |
| Peeling Range | The end of cable insulation and semiconductor φ15-30mm |
| Weight | 0.8kgs |



| Specification | Wire stripper |
|---------------|--------------------------------------|
| Item No. | BX-50 |
| Peeling range | 10V/20V/35V 70-400mm2 insulated wire |
| Length | 335mm |
| Weight | 0.95kgs |



| Specification | Wire stripper |
|---------------------|--|
| Item No. | BX-40A/B |
| A Blade range Range | stripping the main insulation layer of the middle Φ20-40mm power cable end,usually used for stripping the semiconductor layer part of the 10KV cable end. |
| B Blade range Range | stripping the semiconductor layer at the end of middle Φ20-40mm power cable, usually used for stripping the part of the semiconductor layer at the end of 10KV cable |
| Weight | 0.8kgs |

Features&Functions:

- 1. Mainly used for insulated wire, overhead conductors and cables interrupt and fast peeling.
- 2. With a simple, intuitive and convenient, fast skinning, hurt no core, portability and other advantages.
- 3. blade alloy steel manufacturing, heat treatment after grinding more sharp and durable. Removable and exchangeable, grinding.

Cable Steel Wire Rope Grip



| Specification | Wire rope grip |
|---------------|---|
| Item No. | S-1000CL |
| Rated load | 10KN |
| Range | Transmission and distribution ϕ 3-14mm strand, bare copper wire |
| Weight | 0.8kgs |



| Specification | Wire rope grip |
|---------------|--|
| Item No. | S-2000CL |
| Rated load | 20KN |
| Range | Transmission and distribution ϕ 4-22mm strand, bare copper wire |
| Weight | 1.6kgs |



| Specification | Wire rope grip |
|---------------|--|
| Item No. | S-3000CL |
| Rated load | 30KN |
| Range | Transmission and distribution ϕ 16-32mm strand, bare copper wire |
| Weight | 2.8kgs |



| Specification | Wire rope grip |
|---------------|----------------|
| Item No. | SLK-1 |
| Rated load | 8KN |
| For lead | LGJ25-70 |
| Weight | 1kgs |



| Specification | Wire rope grip |
|---------------|----------------|
| Item No. | SLK-2 |
| Rated load | 16KN |
| For lead | LGJ95-120 |
| Weight | 1.5kgs |



| Specification | Wire rope grip |
|---------------|----------------|
| Item No. | SLK-3 |
| Rated load | 30KN |
| For lead | LGJ150-240 |
| Weight | 3.3kgs |

Features&Functions:

1. Adjustment for overhead power lines sag and tighten wire.
2. Using high strengthen aluminum alloy material, presized forging shape, light weight, small size, easy to carry.
3. Applicable to aluminum and ACSR stranding .

Cable Steel Wire Grip Tool



| Specification | Ratchet cable puller |
|-----------------------|----------------------|
| Item No. | JX-10 |
| Rated load | 10KN |
| Over lading test load | 1.25ton |
| Min length | 410mm |
| Stroke | 800mm |
| Weight | 3.2kgs |



| Specification | Ratchet cable puller |
|-----------------------|----------------------|
| Item No. | JX-20 |
| Rated load | 20KN |
| Over lading test load | 2.5ton |
| Min length | 480mm |
| Stroke | 1400mm |
| Weight | 4.7kgs |



| Specification | Ratchet cable puller |
|-----------------------|----------------------|
| Item No. | JX-30 |
| Rated load | 30KN |
| Over lading test load | 3.25ton |
| Min length | 550mm |
| Stroke | 1800mm |
| Weight | 5.2kgs |

Features&Functions:

- 1.Used in power engineer ,telecommunications engineering or a traction device to tighten the the lead groud,playing with the pull .
- 2.Using high-strength steel wire ,not easily pulled off a strong ,forged alloy steel hook for the hook for the system And the majority of oval -shaped hook with a safety device ,aestheticshigh strength .
- 3.Handle can be rotated 360 degrees, the control card can be turned to rotate civil easy to use.

Cable Pulley



| Specification | Cable pulley |
|---------------|--------------|
| Item No. | HL-I |
| Tonnage | 1000T |
| Pulley size | 160x140mm |
| Volume | 28x22x18cm |
| Weight | 4kgs |



| Specification | Cable pulley |
|---------------|--------------|
| Item No. | HL-IB |
| Tonnage | 1000T |
| Pulley size | 160x140mm |
| Volume | 36x25x22cm |
| Weight | 4kgs |



| Specification | Cable pulley |
|---------------|--------------|
| Item No. | HL-III |
| Tonnage | 1000T |
| Pulley size | 160x140mm |
| Volume | 53x32x32cm |
| Weight | 11kgs |



| Specification | Cable pulley |
|---------------|--------------|
| Item No. | HL-IIIB |
| Tonnage | 1000T |
| Pulley size | 160x140mm |
| Volume | 58x32x18cm |
| Weight | 12kgs |

Features&Functions:

The product is widely used in engineering machinery ,electric power petroleum ,mining coal , meallurgy ,paper making ,constructuion port cable and other industries ,cable tunnels show exhibition place or on the ground put the extension cable and wire release the product is divided into single -round and three ,non-fragile cables.

Din Rail Cutter/ PVC Cutter



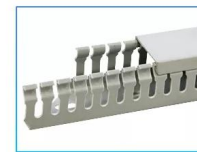
| Specification | Din Rail Cutter |
|---------------|-----------------|
| Item No. | DC-35A |
| Cutting Type | Aluminum |
| Cutting Range | TH 35X7.5mm |
| Volume | 70x17x10cm |
| Weight | 4kgs |



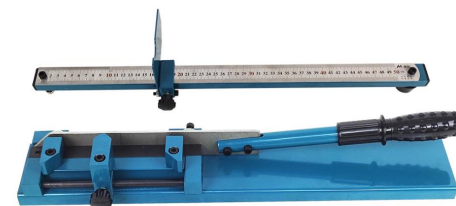
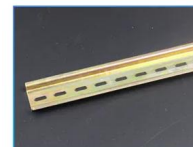
| Specification | Din Rail Cutter |
|---------------|-----------------|
| Item No. | DC-35S |
| Cutting Type | Steel |
| Cutting Range | TH 35X7.5mm |
| Volume | 70x17x10cm |
| Weight | 4kgs |



| Specification | Din Rail Cutter |
|---------------|-----------------|
| Item No. | DC-35SA |
| Cutting Type | Aluminum/Steel |
| Cutting Range | TH 35X7.5mm |
| Volume | 70x17x10cm |
| Weight | 4kgs |



Steel guide
PVC trunking, trunking cover
Aluminum rail



| Specification | PVC Trunking Cutter |
|---------------|---------------------|
| Item No. | SC-01 |
| Cutting Range | 45 Degree/90 Degree |
| Volume | 58x11.5x13cm |
| Weight | 4kgs |

Features&Functions:

- 1.Hand Operated, Portable Tools.
- 2.Designed with a built-in cutting dies

Used in panel shop , electrical switch cabinet assembly line , any places where small sizes of duct cutting work is needed.

Accessories



Specification

Three way reversing valve



Specification

Two way manifold valve



Specification

High pressure oil hose



Specification

Three way manifold valve



Specification

ZG 3/8"



Specification

Four way manifold valve



Specification

M16X1.5



Specification

Gauge



Specification

C-18M



Specification

Solenoid valve